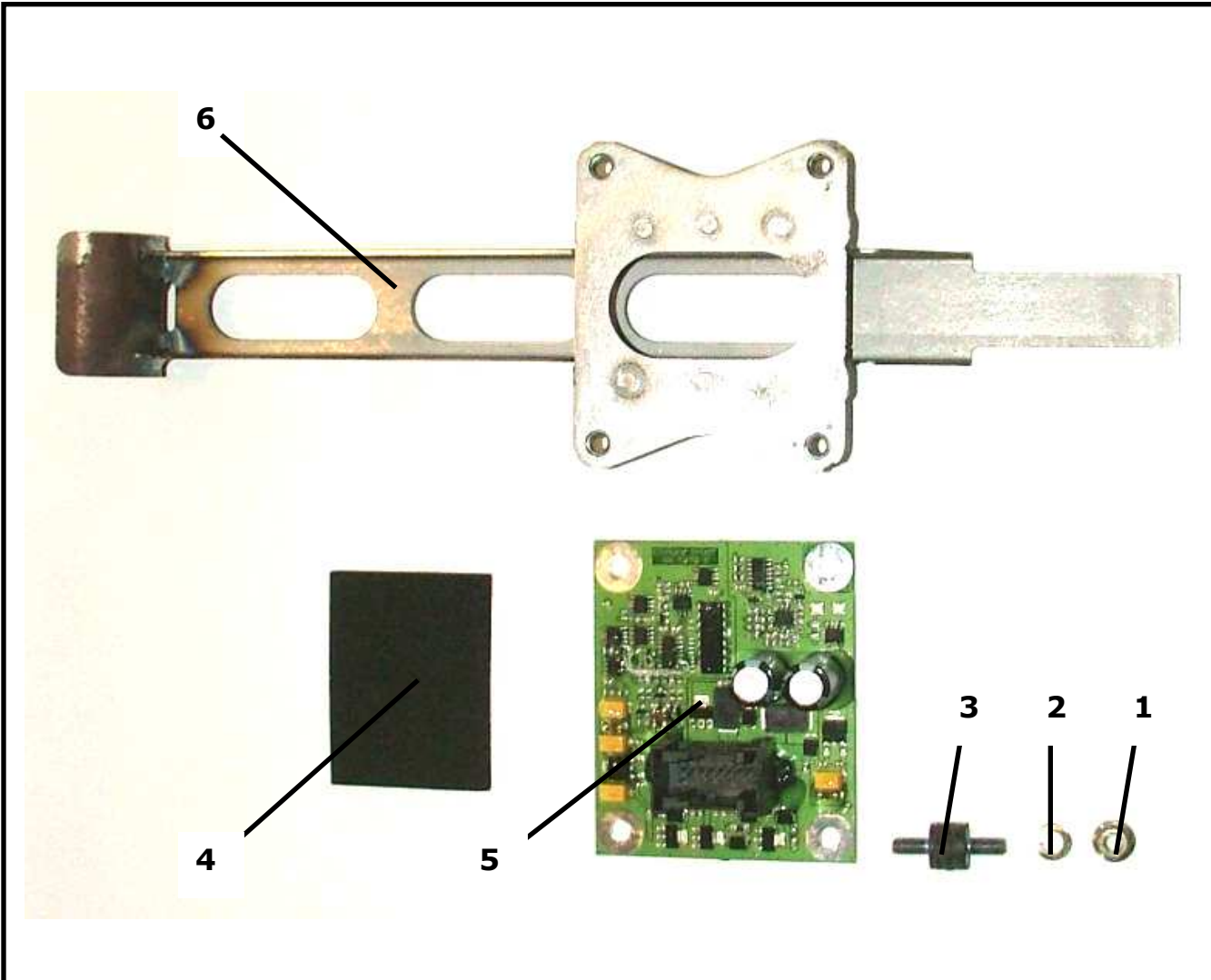


S3A : PRINTED CIRCUIT AND MOUNTING (FOR OPTIONAL RACING LOOM)

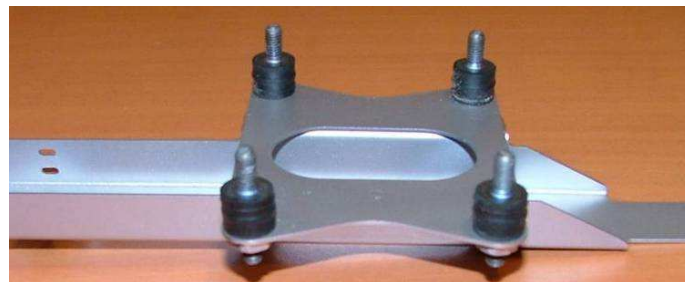


REF	PART NUMBER	QTY	DESCRIPTION
1	BCSP693673	4	M5 Self locking nut
2	BCSP696226	4	Ø5x10.2x0.5 onduflex washer
3	PS78510A10	4	M5 Silent block
4	BCSP412507	1	Printed circuit foam
5	3S1A82140F	1	Printed circuit
6	3S3A62888E	1	Printed circuit bracket
7			
8			
9			
10			
11			
12			
13			
14			
15			

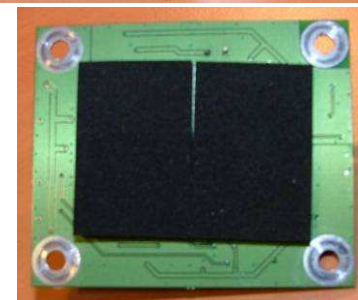
PRINTED CIRCUIT AND MOUNTING ASSEMBLY**A**

Assembly all silent blocks (*ref 3*) on the bracket (*ref 6*), like shown on the picture below :

Apply Loctite 242 on silent block threads,



Stick the foam piece (*ref 4*) on the back of the card :



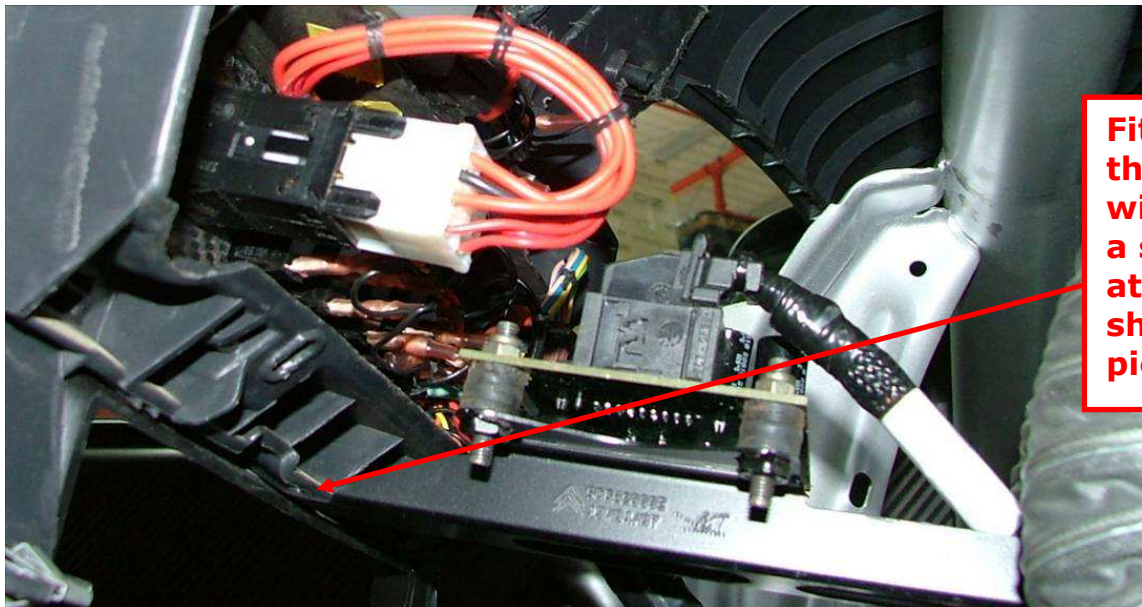
Fit the card on his bracket, with onduflex washers (*ref 2*) and nuts (*ref 1*)



A



Fit the electronic card bracket on the roll cage cross member with a spring clips.



Fit the bracket to the dashboard with a screw and a self locking nut at the location shown on the picture below

