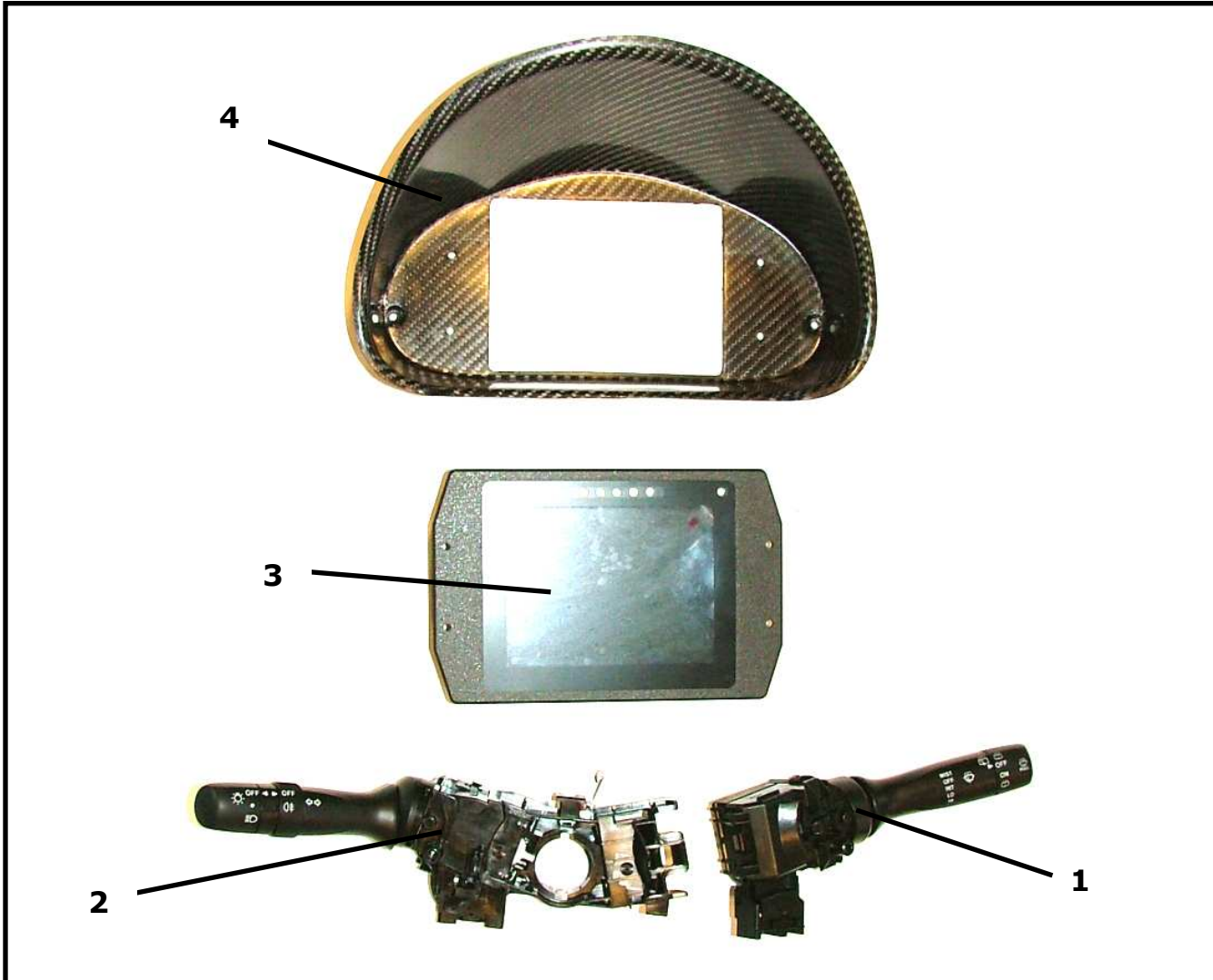


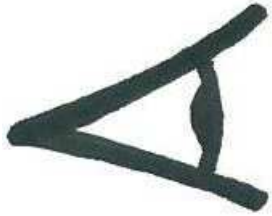
DASH AND LIGHT/WIPPERS CONTROLS (FOR OPTIONAL RACING LOOM)



REF	PART NUMBER	QTY	DESCRIPTION
1	BCSP6239SA	1	Wipper control
2	BCSP6253A0	1	Light control
3	3Z9N62833B	1	Dashboard
4	3S1A62879B	1	Dashboard mounting
5			
6			
7			
8			
9			
10			
11			
12			
13			
14			
15			

DASH AND LIGHT/WIPPERS CONTROLS ASSEMBLY

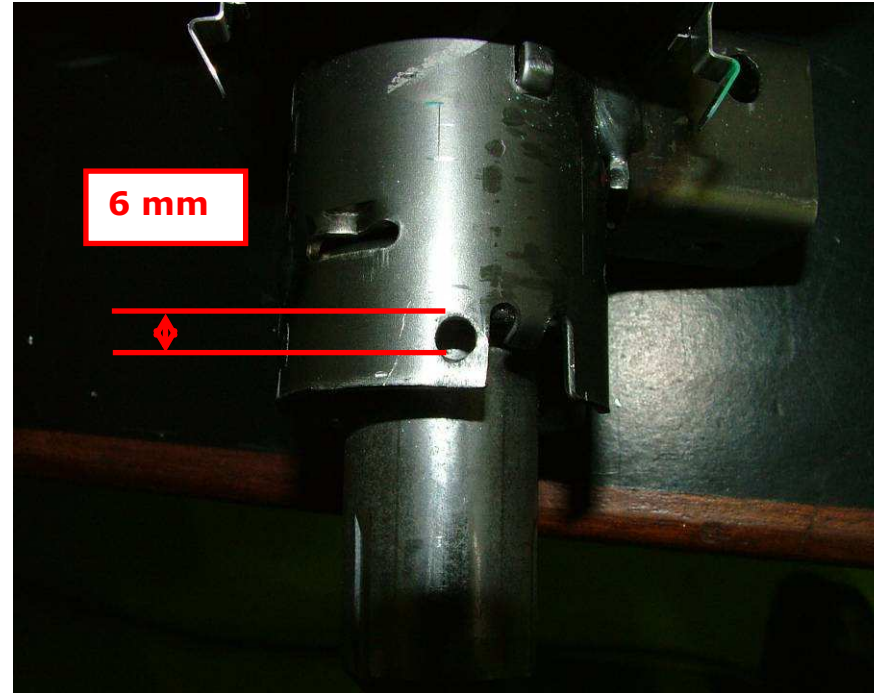
Light / wipers controls assembly



Drill a 6 mm hole in the steering column, at the location shown on picture below.



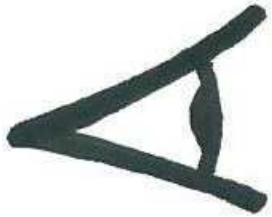
6mm hole



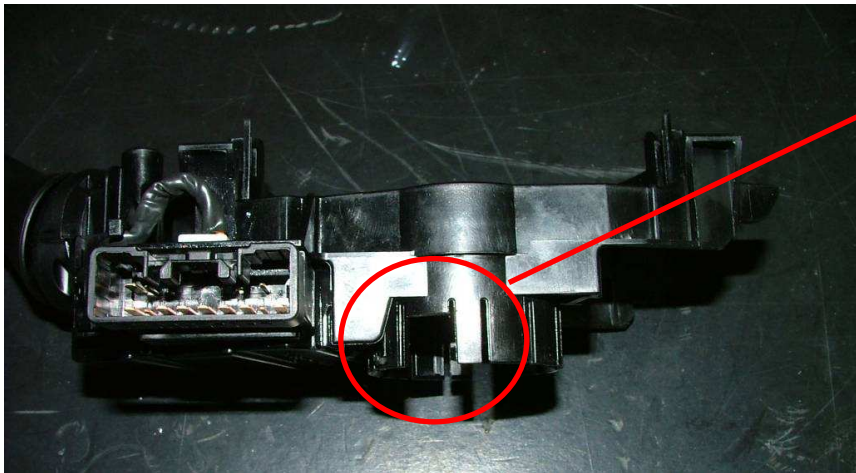
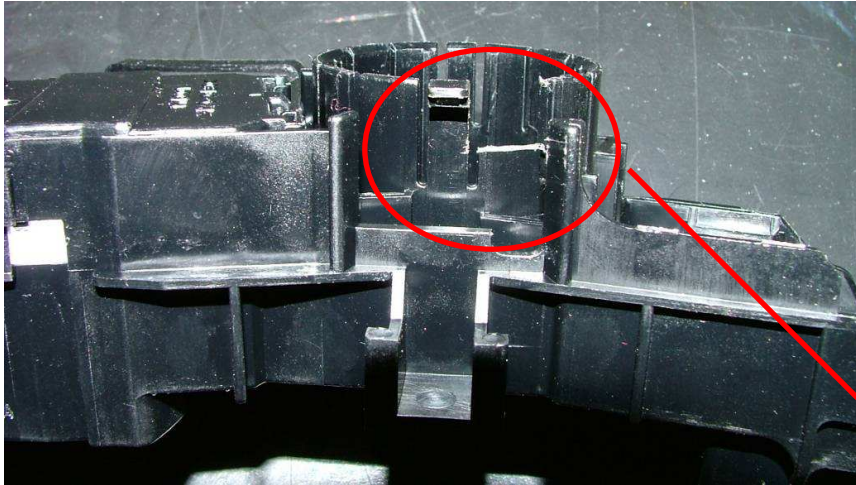
6 mm

**Drill machine,
and 6mm
drill.**

**Light / wipers
controls
assembly**



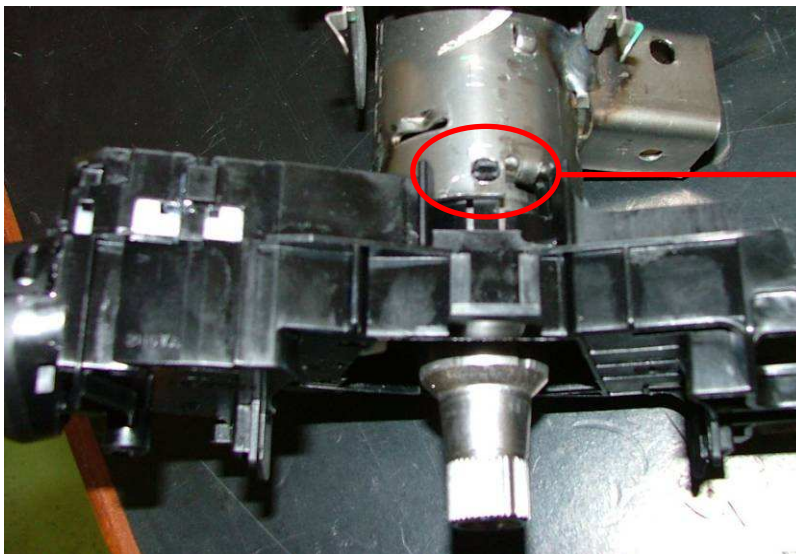
Modify the light control (ref 2), like shown on pictures below :



**Use a cutter to cut
off both tongues,
like shown on
pictures.**

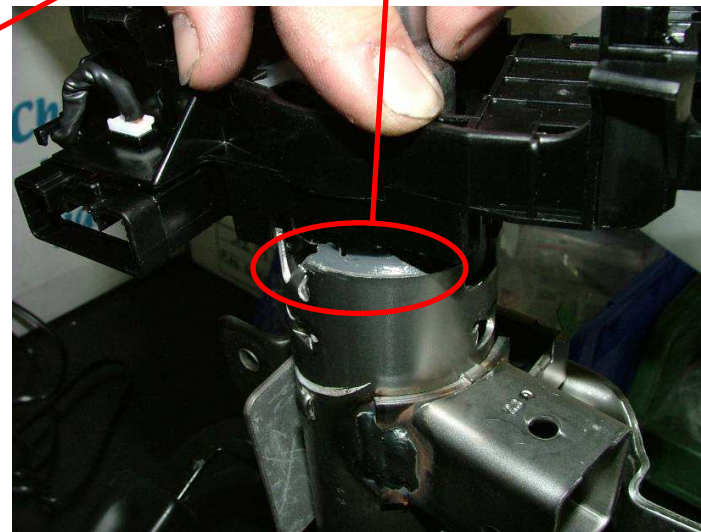
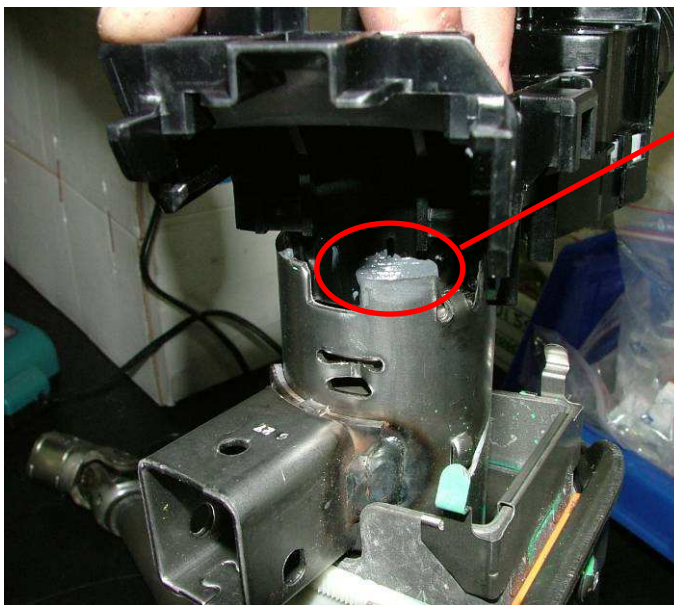
Cutter

A



Insert the light command in the steering column, and be careful not to damage the locating in the steering column hole.

Stick the light command on two sides, like shown on picture below.



**Adekit
A220 / 50 GS
Bi-component**