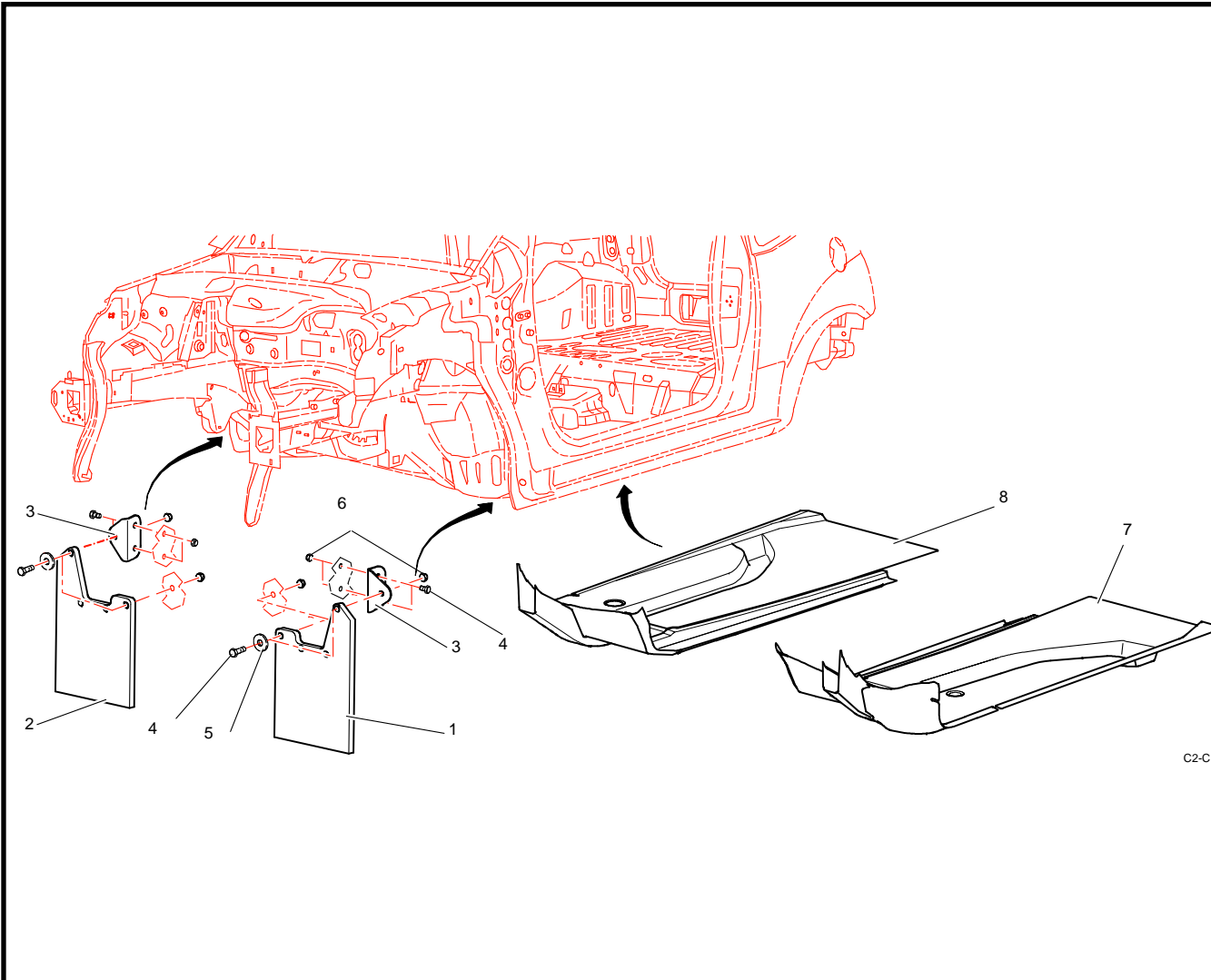


R6C : BODY PROTECTIONS (FOR GRAVEL)

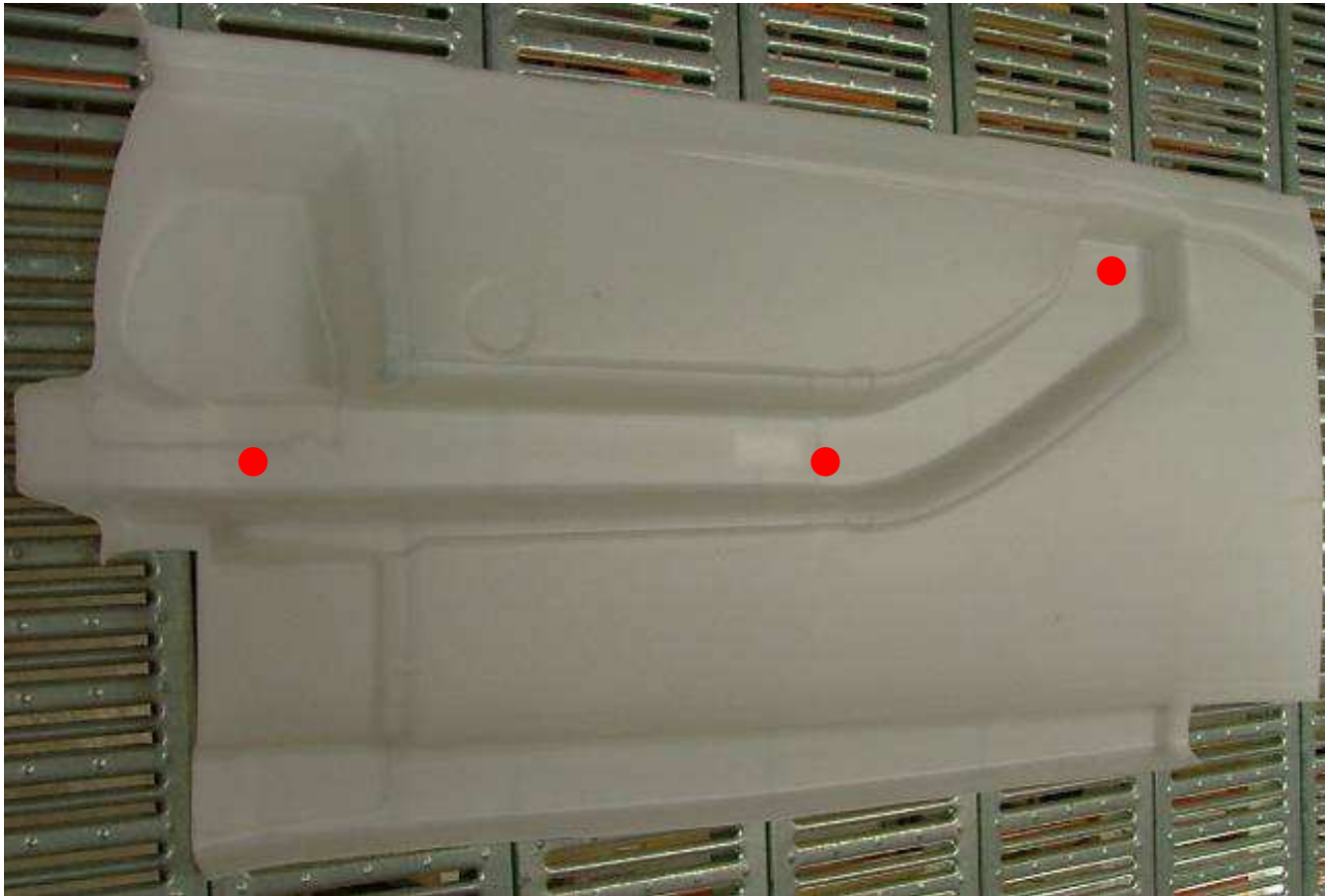


REF	PART NUMBER	QTY	DESCRIPTION
1	2K2E28450B	1	Front left mud flap
2	2K2E28449B	1	Right left mud flap
3	3R6C61206B	2	Mud flap T square
4	CS550023ST	6	M5 L15 H screw
5	BCSP694929	6	Ø5x16x1.5 flat washer
6	BCSP693673	6	M5 self locking nut
7	3R6C60272A	1	Left floor pan shield
8	3R6C60273A	1	Right floor pan shield
9			
10			
11			
12			
13			
14			
15			

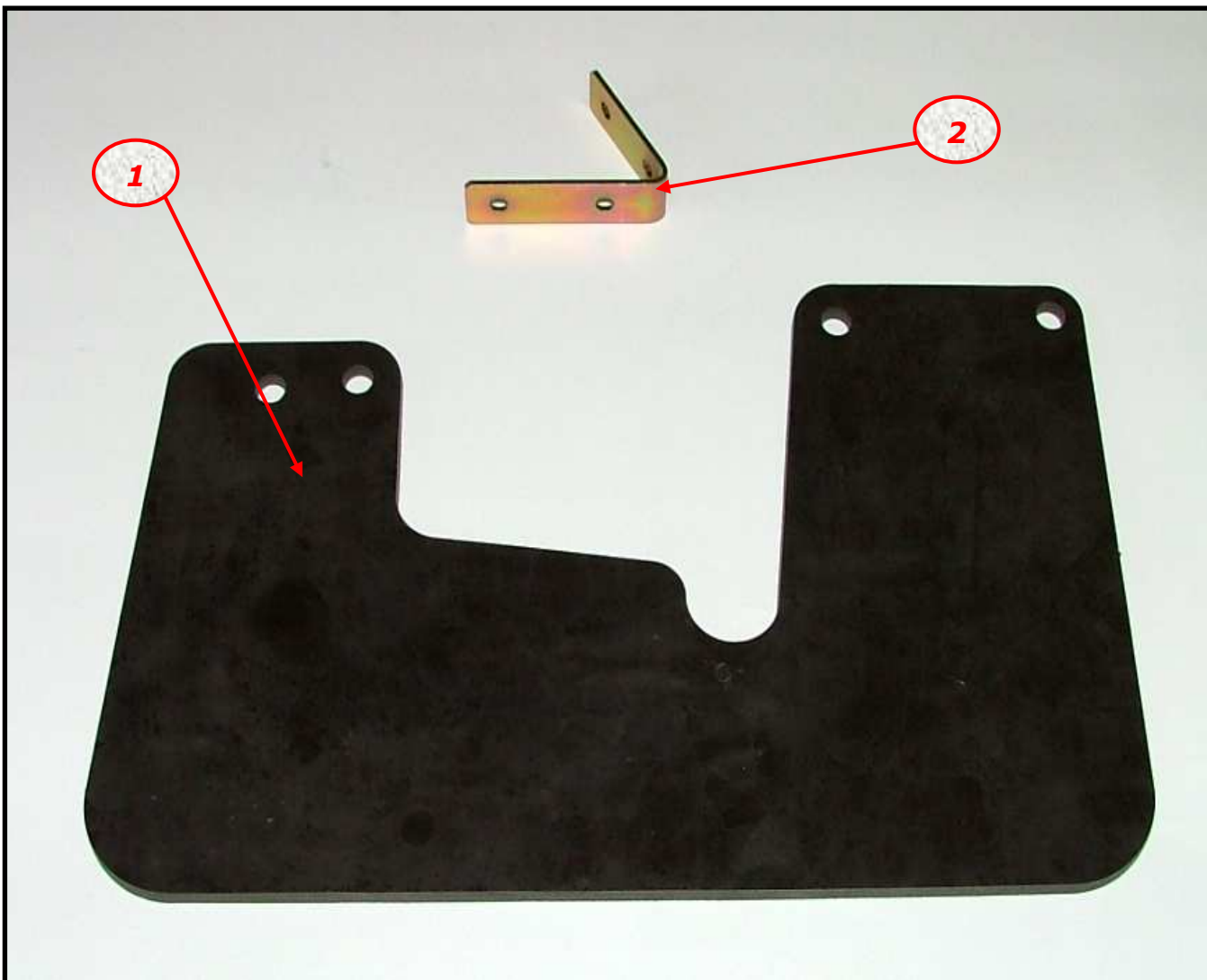
BODY PROTECTIONS ASSEMBLY

A

To don't accumulate some water inside the protection, drill **2 or 3 holes (Ø = 3mm)** on each floor pan shield, like shown on the picture below.




R6C : C2 S1600 FRONT MUD FLAPS (OPTION, FOR GRAVEL)



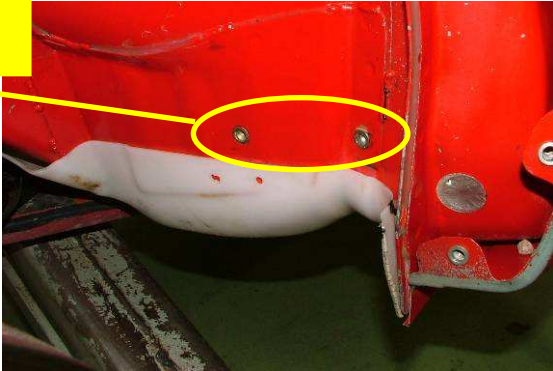
REF	PART NUMBER	QTY	DESCRIPTION
1	3R6C62610A	2	Front Mud Flap, left and right
2	3R6C62611A	2	Front Mud Flap T square, left and right
3			
4			
5			
6			
7			
8			
9			
10			
11			
12			
13			
14			

C2 SUPER 1600 FRONT MUD FLAPS ASSEMBLY

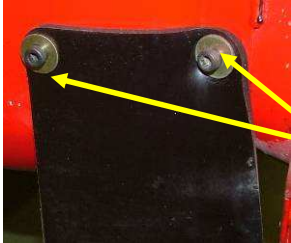

A



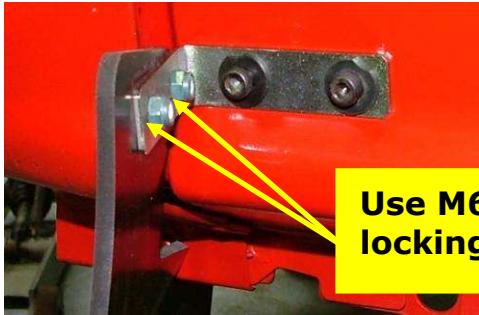
Rivkle insert, Ø6



Final result :

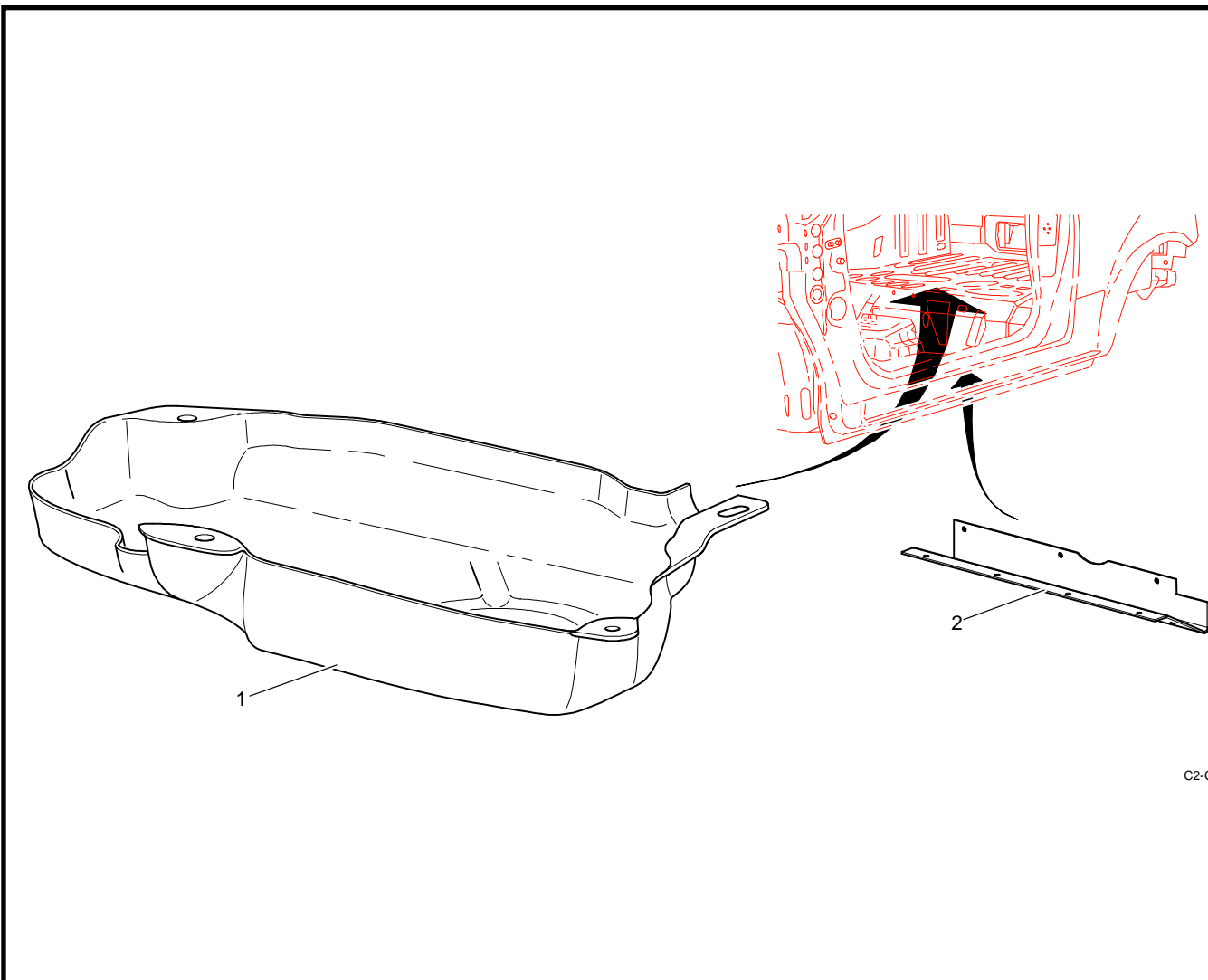


Use Ø6x20x1 washers



Use M6 self locking nuts

R6C : STANDARD FUEL TANK PROTECTION (FOR GRAVEL)



REF	PART NUMBER	QTY	DESCRIPTION
1	36C61293A	1	Gravel standard fuel tank protection
2	3R6C61277B	1	Fuel gravel deflector
3			
4			
5			
6			
7			
8			
9			
10			
11			
12			
13			
14			
15			

STANDARD FUEL TANK PROTECTION ASSEMBLY

A

To don't accumulate some water inside the protection, drill **2 or 3 holes (Ø = 3mm)** on the fuel tank protection, like shown on the picture below.

