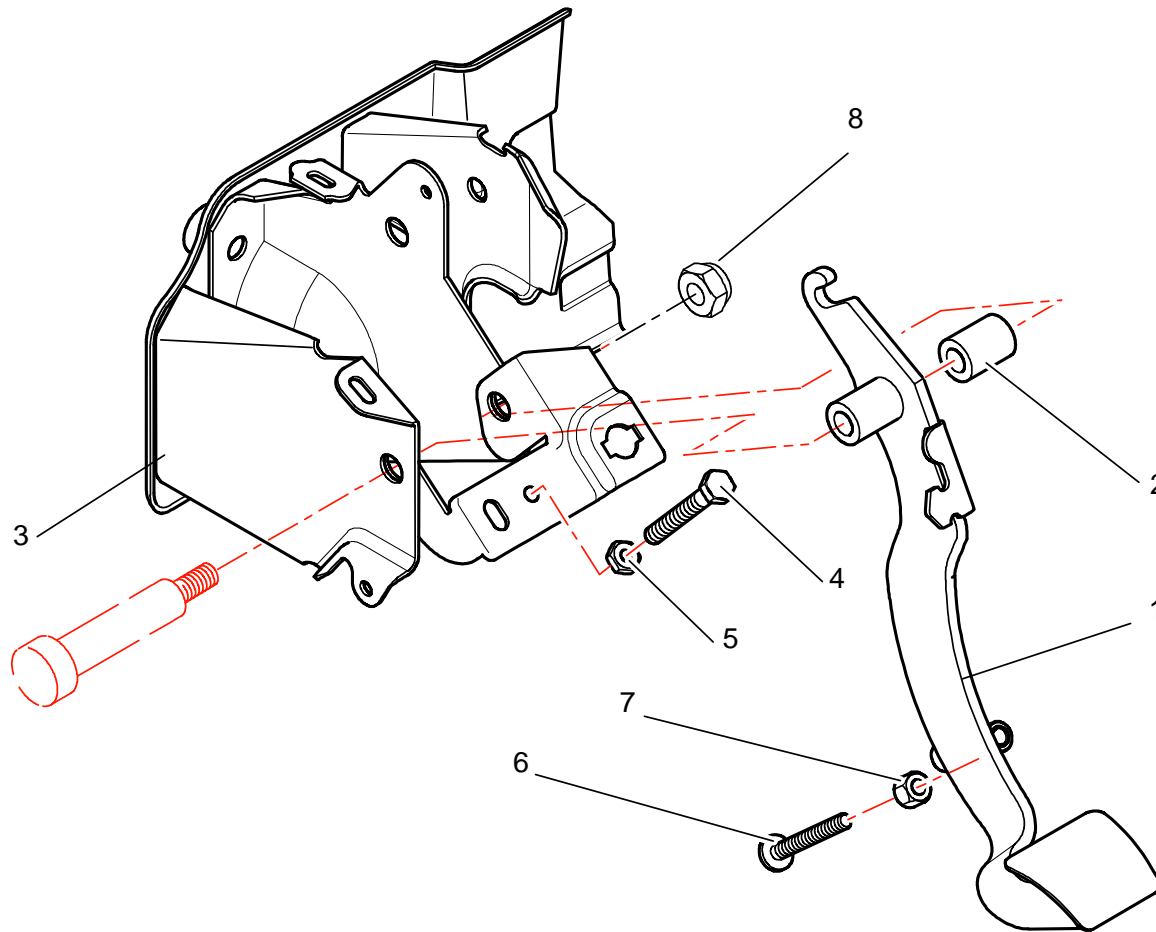


*Chapter G :*

***CONTROLS***  
***(gearbox, brakes, clutch)***

**G11 : PEDAL BOX**



REF	PART NUMBER	QTY	DESCRIPTION
1	1G1161207B	1	Modified clutch pedal
2	1G1161210B	1	Clutch pedal spacer
3	1G1161211A	1	Pedal mounting
4	1G1161212A	1	Top clutch pedal stop
5	BCSP693626	1	M6 H nut
6	1G1161209C	1	Bottom clutch pedal stop
7	BCSP693622	1	M8 H nut
8	BCSP693983	1	M8 self locking nut
9			
10			
11			
12			
13			
14			
15			

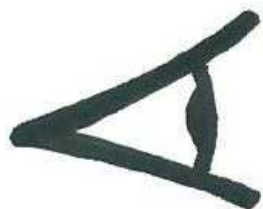
**CLUTCH PEDAL ASSEMBLY**



Clutch pedal nut (*ref 8*) torque

**3.5 m.kg**

## CLUTCH PEDAL LIMIT STOP ADJUSTING



Follow thoroughly instructions below, to adjust correctly the limit stop. If the pedal displacement is higher than the displacement of the diaphragm, overpressure in the cable can damage it, particularly on the plastic part of hang to the pedal, the most fragile zone of the cable.

### Adjusting instructions :

- To screw the limit stop so that it does not obstruct the adjustment of the clutch free play.
- To regulate the clutch free play, and to screw the counter nut on the side of the clutch fork after having a tested the car as preliminary.
- To press thoroughly on the clutch pedal, by taking guard exaggeratedly not to support in end of the clutch play so as not damage the cable.
- Always pedal in the bottom, to bring the limit stop until the contact of the floor by unscrewing it.
- Release the pedal, unscrew the limit stop of half a turn or a turn if necessary, and tighten the counter nut.

**Nota :** during an adjustment of the clutch free play in service or at the workshop, it is also advised to check if the position of the limit stop is functional. In the contrary case, readjust it.

