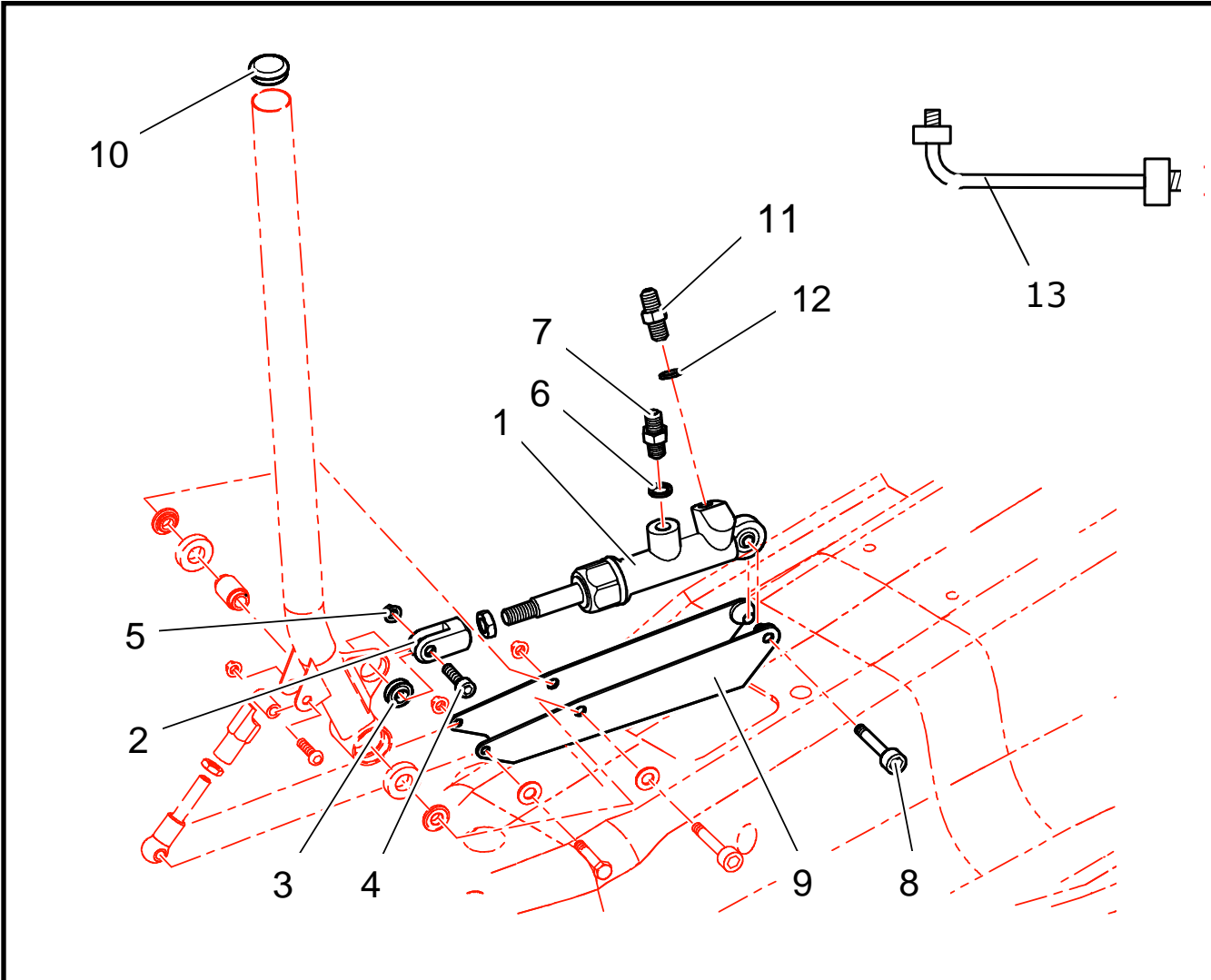


F71 : VERTICAL HYDRAULIC HAND BRAKE 1/2 (Optional)



REF	PART NUMBER	QTY	DESCRIPTION
1	1F6362701A	1	AP Master cylinder
2	1F7143365B	1	Master cylinder clevis
3	CS450003ST	1	SSA610 ball
4	PS82017A10	1	M6 I25 cl12.9 alen screw
5	PS74030A10	1	M6 self locking nut
6	PS81504A10	1	Ø10.2x13.5x1.5 copper ring
7	1F6362702A	1	Male-Male Dash3 7/16 connector
8	1F7162505A	1	Master cylinder fitting screw
9	1F7162504B	1	Master cylinder bracket
10	1G2141595A	1	Lever cap
11	1F6311376B	1	Male-Male M10 3/8" connector
12	PS81506A10	1	Ø11.2x16.1x1 copper ring
13	1F6361201C	1	Master cylinder to brake limiter hose
14			

HYDRAULIC HAND BRAKE ASSEMBLY 1/2

A

Unweld and take off the standard hand brake mounting, and its reinforcement.



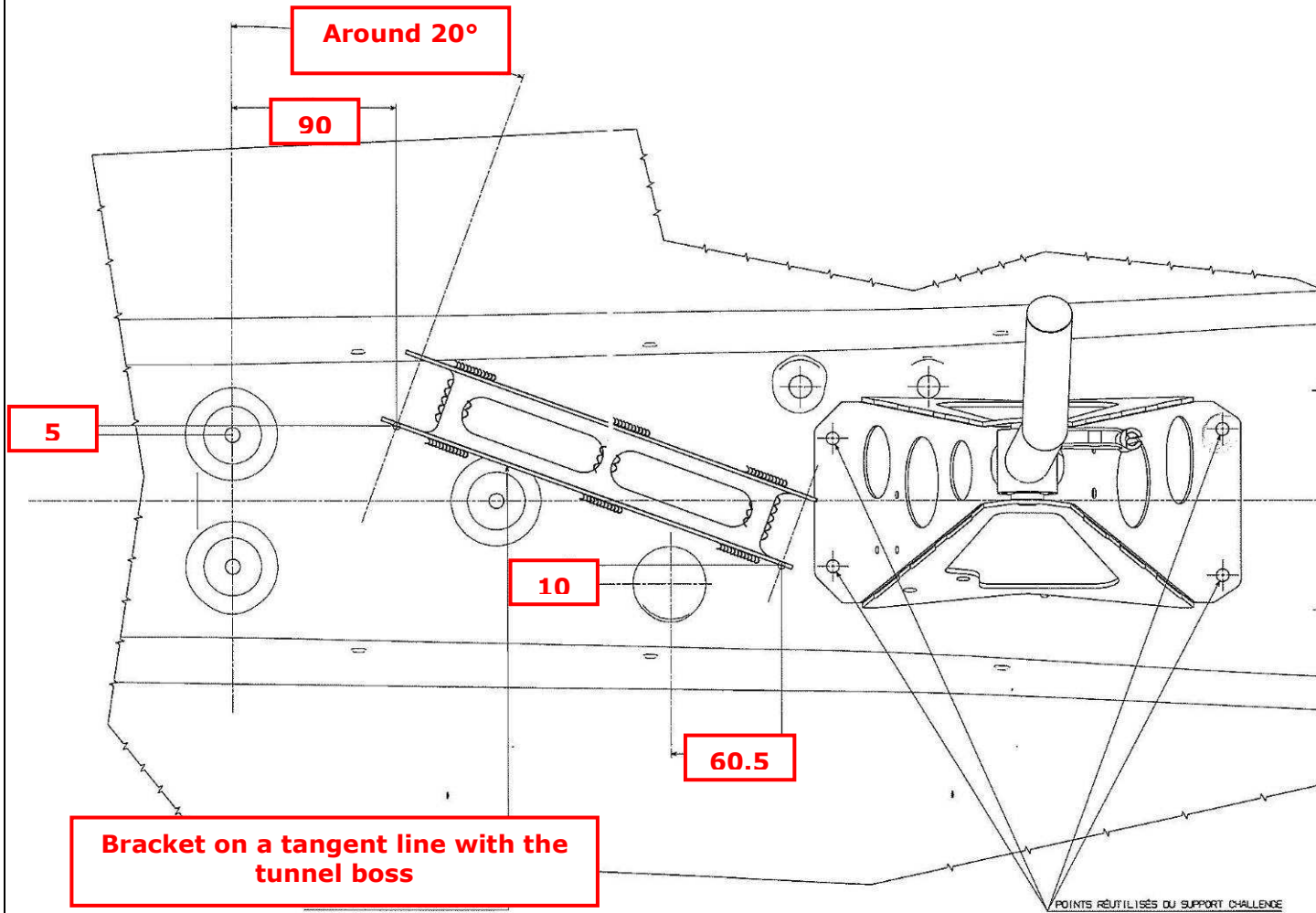
A

Strip welding areas.



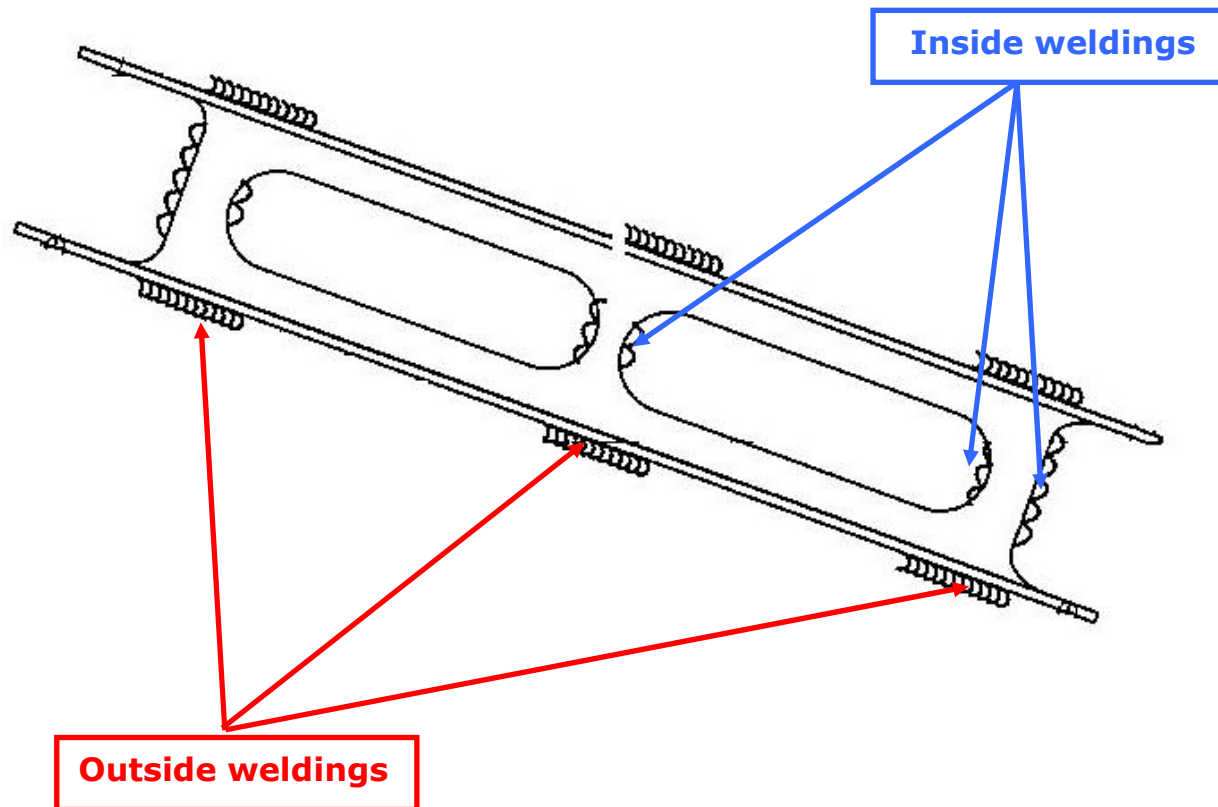
A

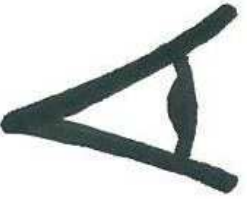

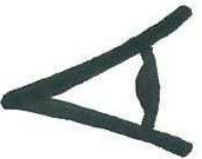



Locate the master cylinder bracket by following instructions below, and tack weld it.



A

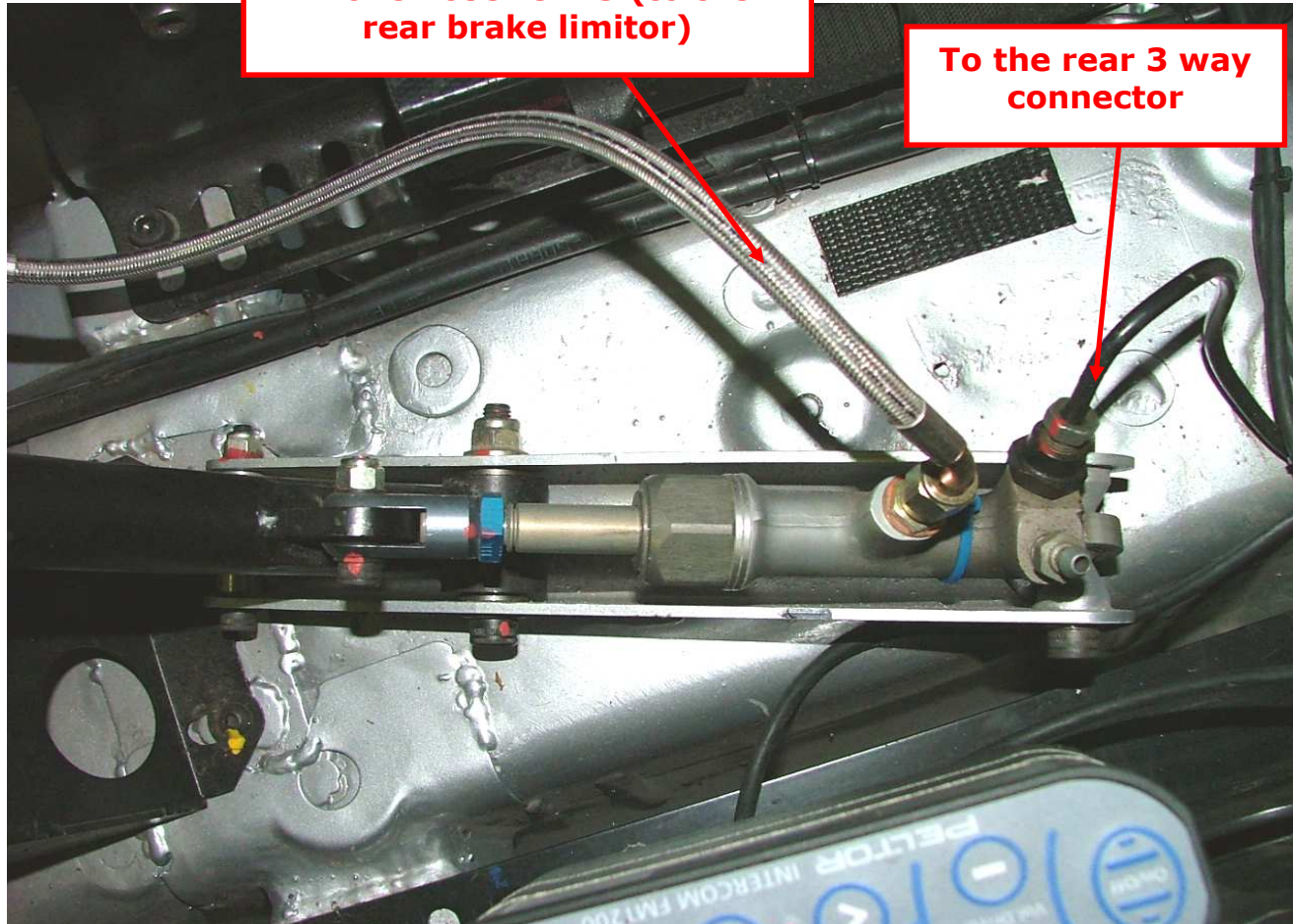
Weld by discontinued sills the master cylinder brackets, inside and outside, as shown on the drawing below :



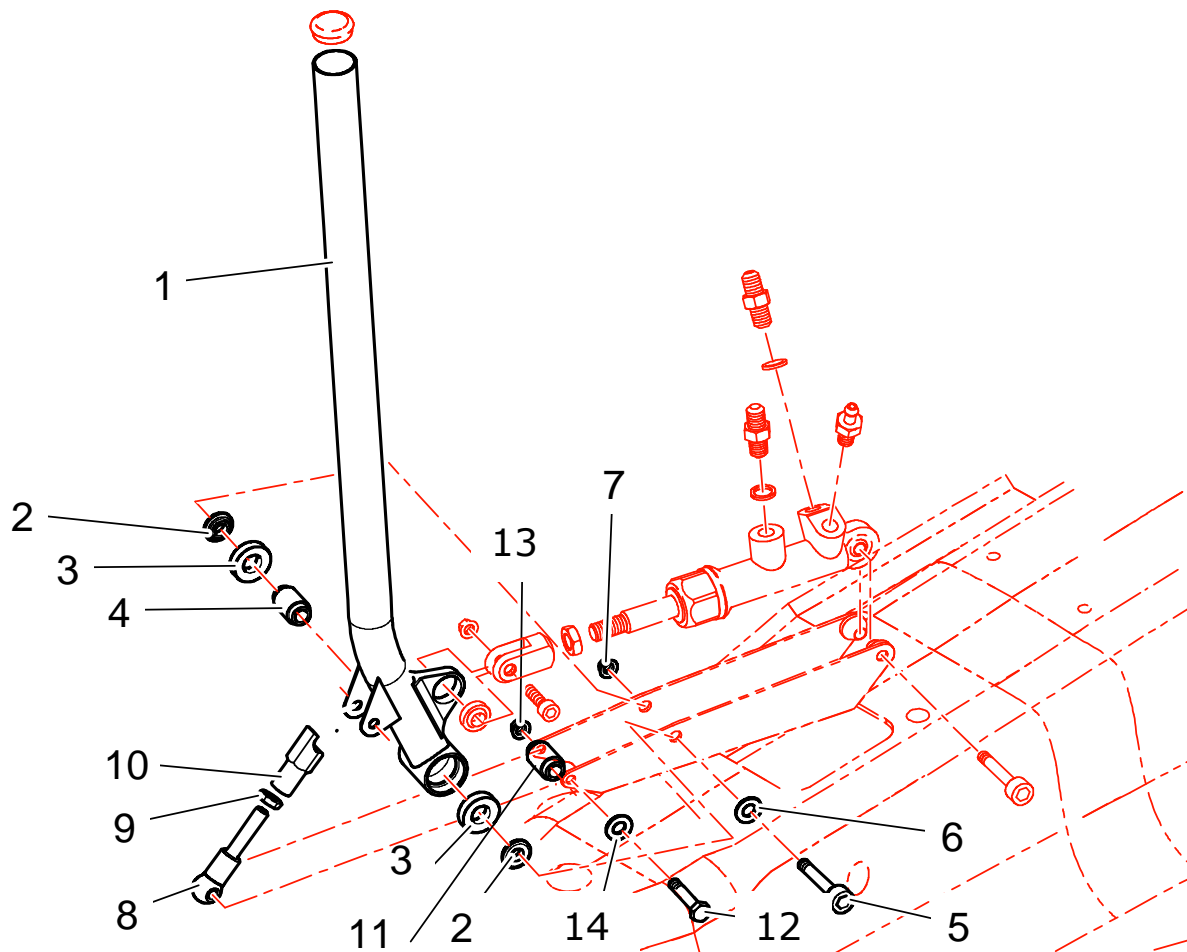
	<p>Final result :</p> 	
	<p>Assembly the lock nut of the master cylinder, and the clevis.</p>	
	<p>Assembly both connectors on the master cylinder (<i>ref 7 and 11</i>) with both copper rings (<i>ref 6 and 12</i>).</p>	<p>1.5 m.kg</p>
	<p>Master cylinder fitting screw torque (<i>ref 8</i>)</p>	<p>2 m.kg + Loctite 242</p>
	<p>Lever / master cylinder screw (<i>ref 4</i>)</p>	<p>1.5 m.kg + Loctite 242</p>

A

Final result :

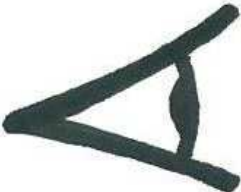







F71 : VERTICAL HYDRAULIC HAND BRAKE 2/2 (Optional)



REF	PART NUMBER	QTY	DESCRIPTION
1	1F7160380A	1	Hand brake lever
2	1G2241233A	2	Lever ring
3	PS89648A10	2	Ø24x12x6 ball bearing
4	1F7143364A	2	Ball bearing spacer
5	PS82048A10	1	M8 I55 cl12.9 Alen screw
6	CS440031ST	1	Ø8x18x1.5 flat washer
7	BCSP693999	1	M8 self locking nut
8	1F7162486A	1	Lever male hand brake locking link
9	PS74022A10	1	M8 H nut
10	1F7145663A	1	Lever femelle hand brake locking link
11	1F7162511A	2	Hand brake locking spacer
12	PS82056A10	1	M6 I55 cl12.9 alen screw
13	PS74030A10	1	M6 self locking nut
14	BCSP694777	2	Ø6x12x1.2 flat washer
15			

HYDRAULIC HAND BRAKE ASSEMBLY 2/2

	<p>Check ball bearings locations on the lever. It has to be clean, without paint or oxydation. If necessary, clean it with N°600 sand paper.</p>	
	<p>Apply softly some 648 Loctite on the external ball bearing housing (<i>ref 3</i>). Assembly the ball bearing in the lever with a vise and a socket (same diameter than the external ball bearing). The bearing has to be stopped by the lever shoulder.</p>	<p>Loctite N° 648</p>
	<p>Assembly the ball bearing spacer (<i>ref 4</i>) on the ball bearing assembled in the lever.</p>	
	<p>Assembly the second ball bearing in the lever, in the same way than the first one.</p>	<p>Loctite N° 648</p>
	<p>Don't forget to assembly both lever ring when you assembly the lever on the master cylinder bracket.</p>	
	<p>Hand brake locking (<u>the adjustment will be done at the end,</u>) : assembly the nut (<i>ref 9</i>) on the male link (<i>ref 8</i>), and assembly the femelle link (<i>ref 10</i>).</p>	

<p>!!!</p>	<p>Assembly the hand brake locking link. The link has to be between both spacers (<i>ref 11</i>), don't forget it !!!</p>	
	<p>Hand brake locking link screw (<i>ref 14</i>) torque</p>	<p>2 m.kg + Loctite 242</p>
	<p>Assembly the hand brake lever on the bracket, and torque the screw (<i>ref 5</i>)</p>	<p>3.5 m.kg + Loctite 242</p>
<p>A</p>	<div data-bbox="405 954 815 1347" style="border: 2px solid red; padding: 5px; color: red; font-weight: bold;"> <p>Apply some « 3M Velcro » on the lever and on the gear lever mounting. This way, during stage and during a hand brake the link will never be « on ».</p> </div> 