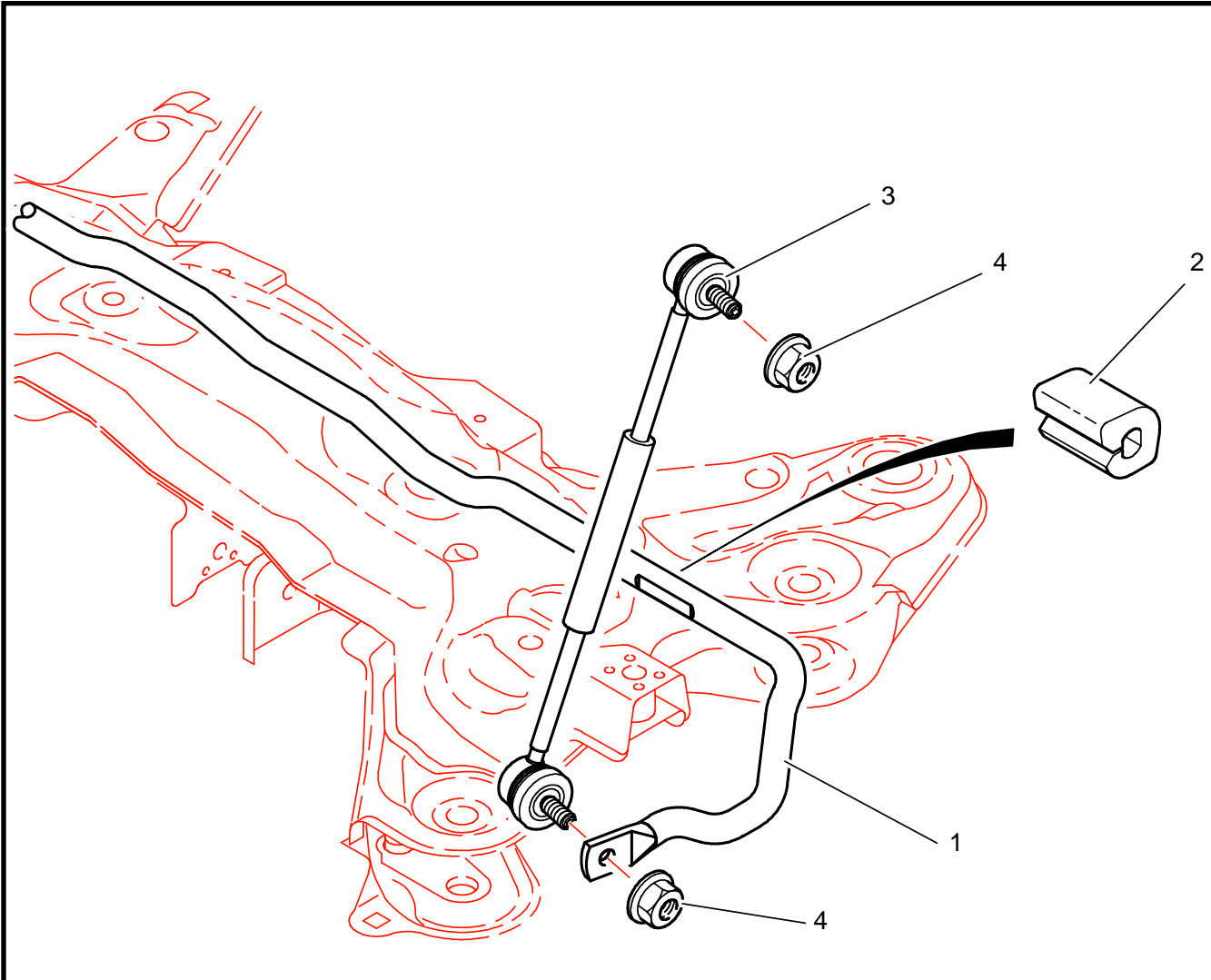




E15 : FRONT ANTI ROLL BAR (Tarmac and Gravel)

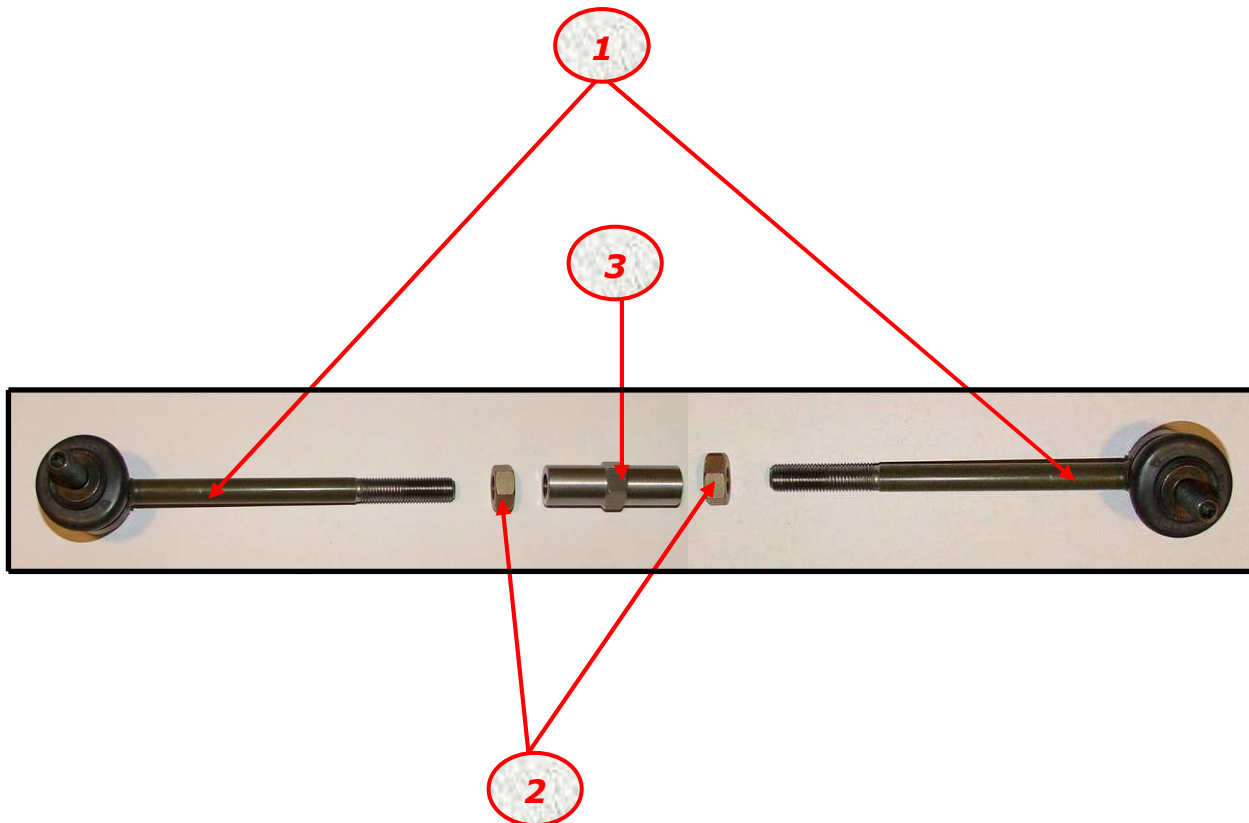


REF	PART NUMBER	QTY	DESCRIPTION
1	BCSP5081G1	1	Tarmac Ø 20 mm front anti roll bar
1	9639923180	1	Gravel Ø 17 mm front anti roll bar
2	BCSP509496	2	Tarmac anti roll bar bearing
2	9643149680	2	Gravel anti roll bar bearing
3	1E1561090B	2	Anti roll bar link
4	BCSP6936A2	4	M10 nut with washer
5			
6			
7			
8			
9			
10			
11			
12			
13			

ANTI ROLL BAR LINK ASSEMBLY

	Anti roll bar / subframe screw torque	8 m.kg
	Anti roll bar link nut with washer screw torque	3.2 m.kg

E15 : ADJUSTABLE ANTI ROLL BAR LINK (OPTION)



REF	PART NUMBER	QTY	DESCRIPTION
1	1E1562791B	2	Anti-Roll Bar half Link
2	BCSP693243	2	Anti-Roll Bar Link Nut
3	1E1562792B	1	Anti-Roll Bar Link Adjusting Sleeve
4			
5			
6			
7			
8			
9			
10			
11			
12			
13			
14			
15			

ADJUSTABLE ANTI ROLL LINK ASSEMBLY

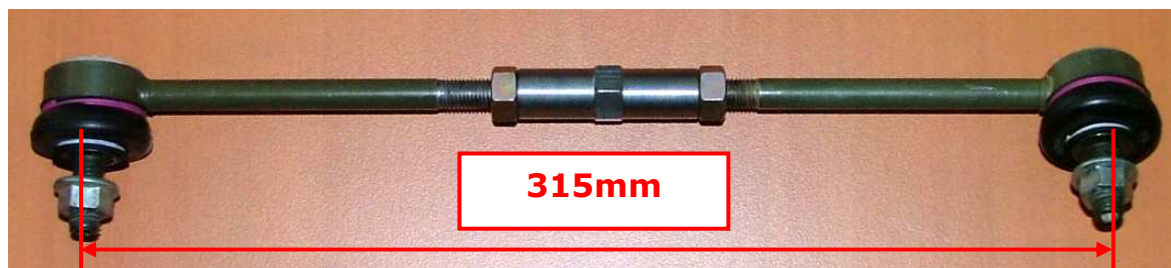
A

The adjustable anti roll link has been developed to keep the right weight balance done on balances, when you connect the front anti-roll bar to the front axle. Please find below how to use it.

Do the weight balance without forgetting to disconnect the front anti roll bar.



Rod preparing : Adjust the distance between both axis of each adjustable rod to have 315mm (like shown on picture below). Tightened one rod, and let the second free to be adjusted.



A

- Assembly the tightened adjustable rod on one side of the car (the car is still on balances)
- Assembly the second rod, without any effort to connect it on the strut and on the bar as well, by adjusting the length if necessary.
- Tighten both bolts on the rod, and measure it to prepare a spare.
- Check the weight balance with and without the front anti roll bar connected. Values are the same if the job done is OK.

3.2 m.kg

3.2 m.kg