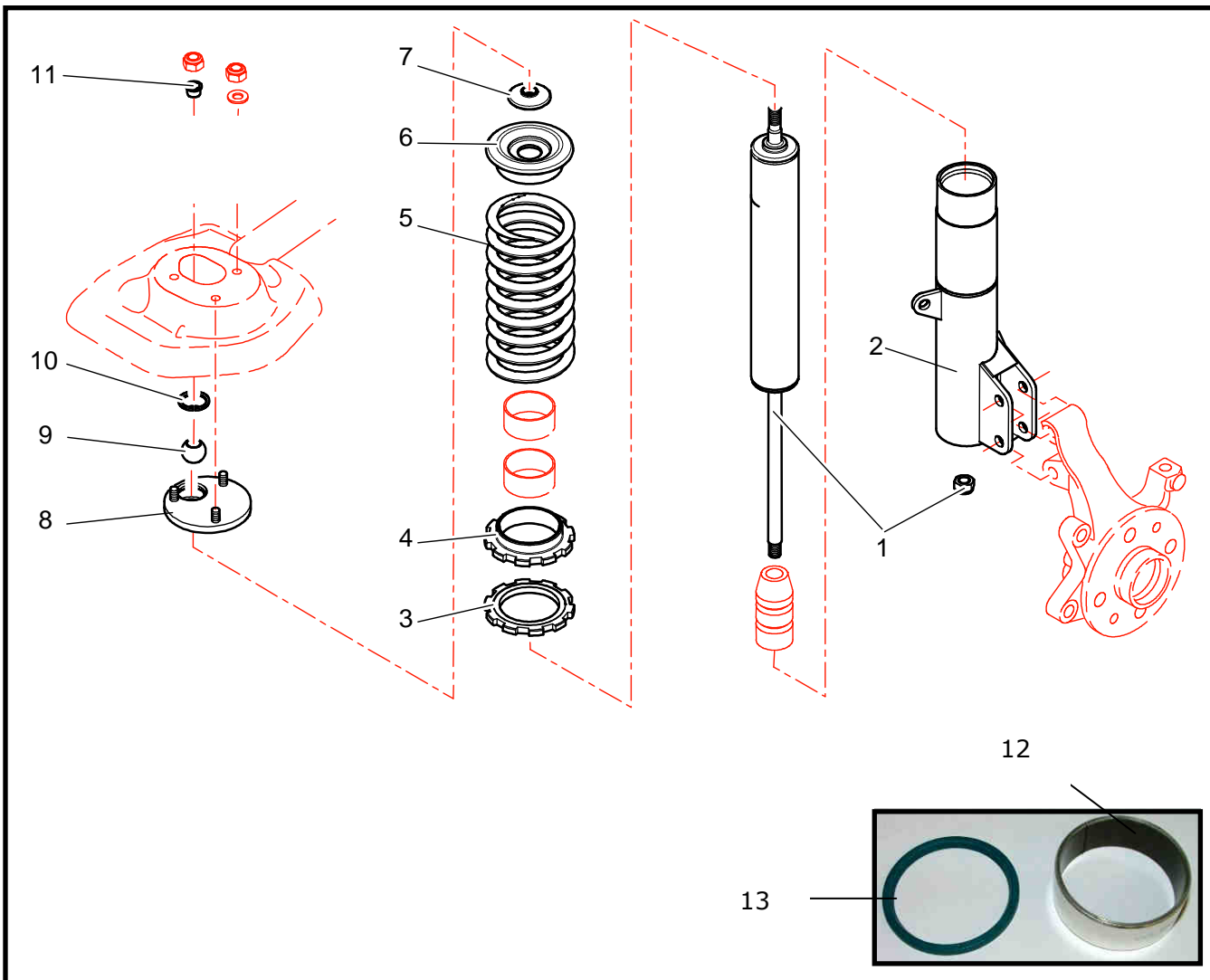


**E14 : FRONT SHOCKS (TARMAC)**

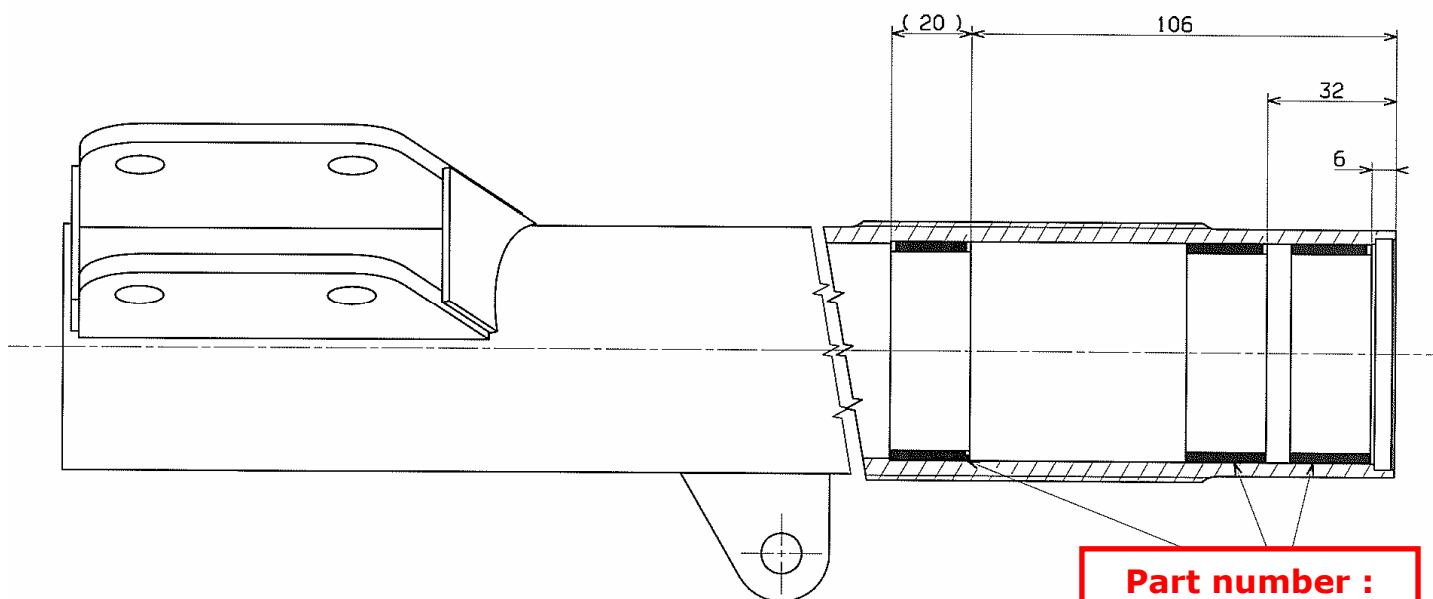


REF	PART NUMBER	QTY	DESCRIPTION
<b>1</b>	1E1461434A	2	Tarmac front shock
<b>2</b>	1E1462806A	1	Right front strut
<b>2</b>	1E1462807A	1	Left front strut
<b>3</b>	1E1461243C	2	Lock nut low spring cup
<b>4</b>	1E1461242C	2	Low spring cup
<b>5</b>	1E1461328A	2	45 N/mm tarmac front shock spring
<b>6</b>	1E1461315B	2	Top spring cup
<b>7</b>	1E1461003C	2	Top shock plate low spacer
<b>8</b>	1E1461002C	2	Top shock plate
<b>9</b>	1E1464129A	2	GLRSW 14 ball
<b>10</b>	PS72566A10	2	ø34 Thick 1.5 inside clips
<b>11</b>	1E1410182A	2	Top shock plate top spacer
<b>12</b>	CS080003ST	6	Strut bearing
<b>13</b>	PS75592A10	2	Strut seal
<b>14</b>			

**FRONT SHOCKS ASSEMBLY**

A

Assembly bearings inside the front strut, at right locations as shown on the drawing below :






**Part number :  
CS080003ST**

A

Assembly the seal on the top of the strut, be carefull of the side, as shown on the picture :

**Side of the seal  
assembled.**



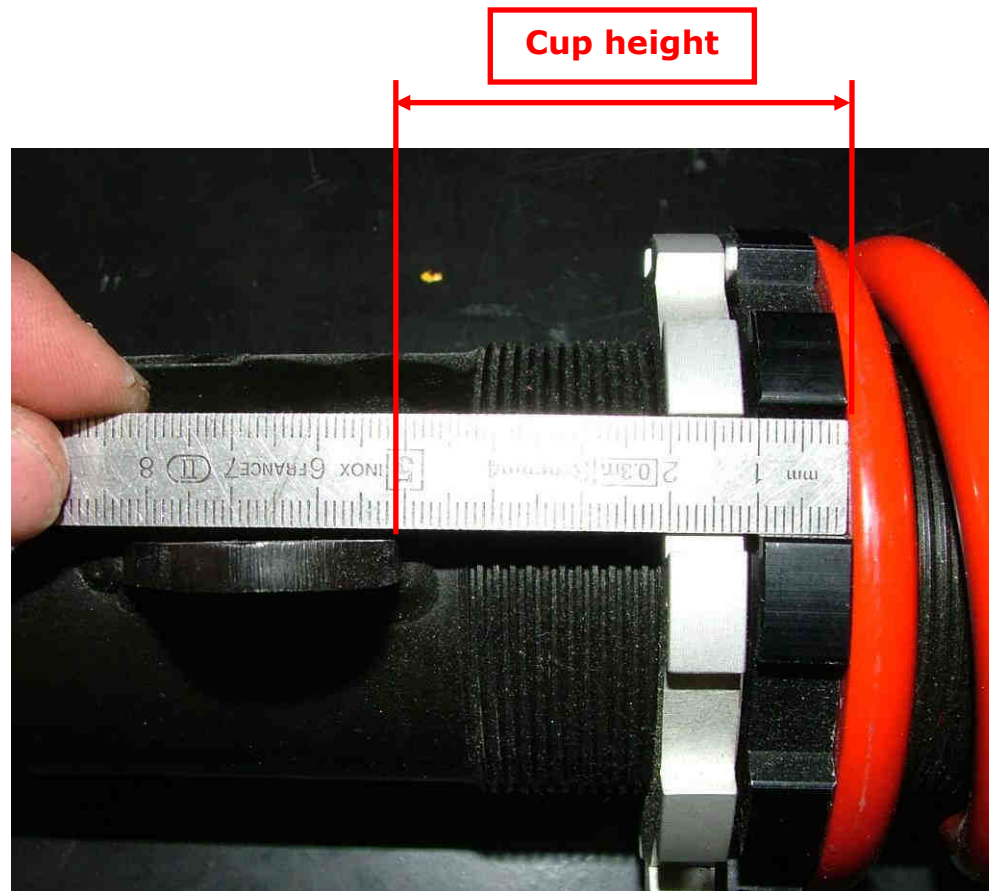
	<p>Apply some Kubler grease (<b>part number CS29001ST</b>) on the body of the shock, on front strut bearings and inside the front strut.</p>	<p><b>Kubler grease</b></p>
<p>!!!</p>	<p>Apply some <b>WD40</b> on low spring cup threads and on lock nut low spring cup threads. Screw both cups all along the strut thread, to check if there's no hard point.</p>	<p><b>WD40</b></p>
<p>!!!</p>	<p>Pay attention about headless allen screw on the top of the shock. Never unscrew it, and never use it to torque the shock with the shock top plate.</p> <p><b>This screw is used to fill out the gas inside the shock.</b></p>	
	<p>Shock spindle self locking nut torque</p>	<p><b>6 m.kg + Loctite 242</b></p>



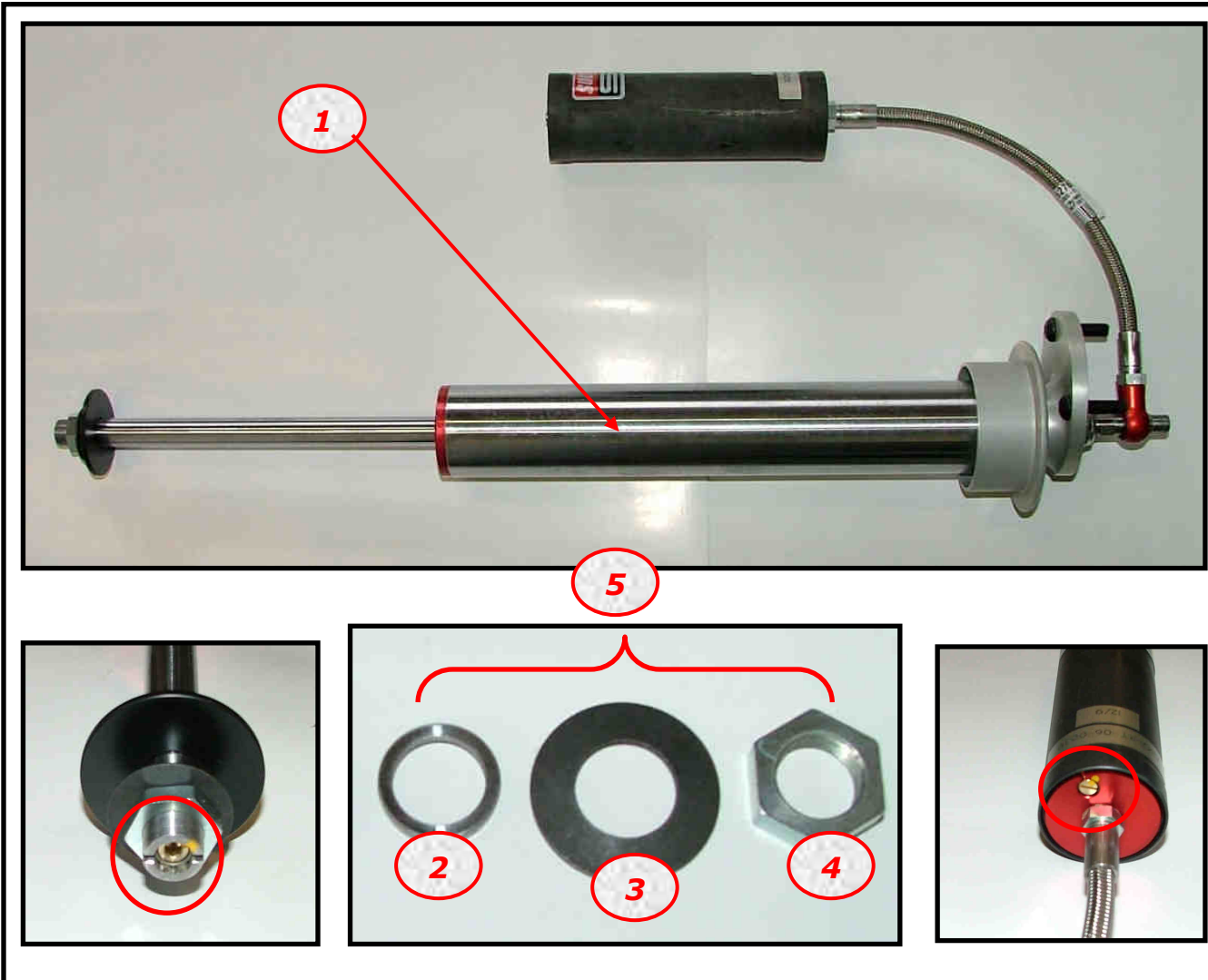
Spring location measurement :

After car setting (toe-in, camber, ride height, weight balance), it is important to note front and rear, left and right spring location in case of shock replacement.

For the front, measure the cup height as shown on the picture below :

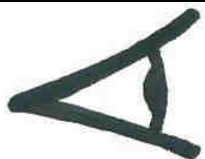


**E14 : ADJUSTABLE TARMAC FRONT SHOCKS (OPTION)**



REF	PART NUMBER	QTY	DESCRIPTION
1	1E1462767A	2	Front tarmac adjustable shock (2+3+4 included)
2	1E1462771A	2	Strut washer
3	1E1462770A	2	Spring washer
4	1E1462769A	2	Hexagonal nut
5	1E1462772A	1	Front adjustable shock spindle kit
6			
7			
8			
9			
10			
11			
12			
13			
14			
15			

**ADJUSTABLE FRONT SHOCKS ASSEMBLY**



Follow instructions for the assembly of a standard shock (page 2,3 and 4), specific instructions are describe below.

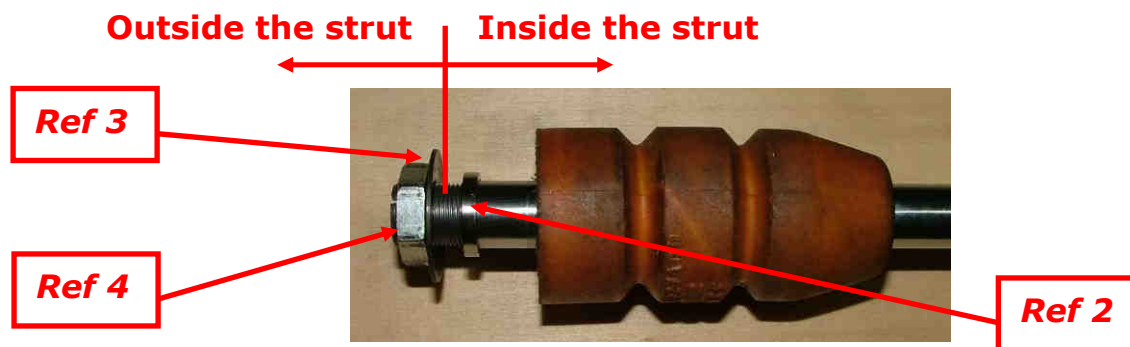


Drill a 15mm hole throughout the thread of the strut, in the bottom.



Take off the bump stop of the non adjustable shock, and fit it on the adjustable.

Before to assembly the strut, pay attention of washers location as shown on picture below :

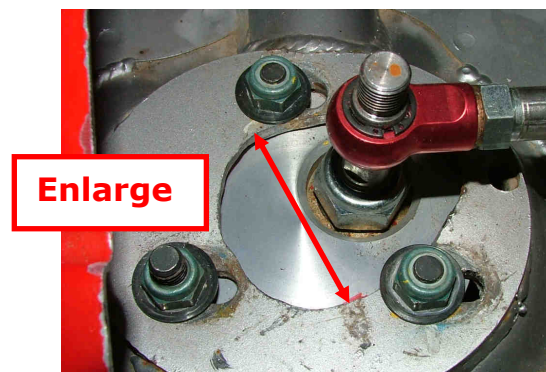




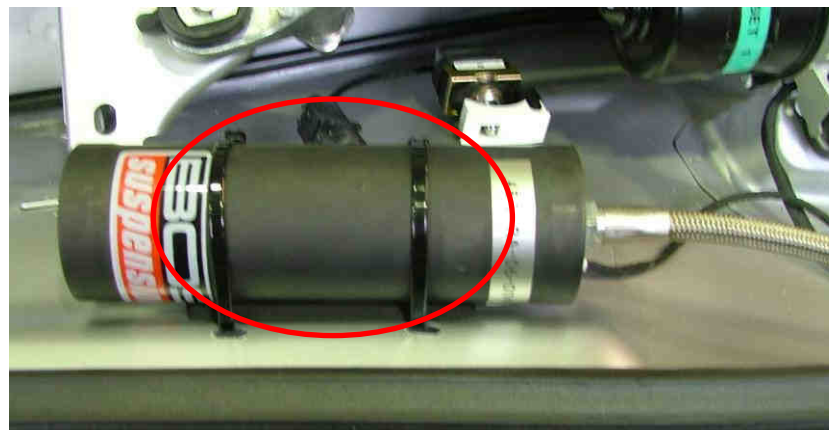
Apply Loctite **242** on the thread of the shock spindle, torque the nut with a « makita ».

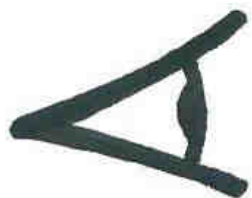
Do a paint sign on the screw and on the strut, facing each other to check the torque during services.

Enlarge the hole of the top shock plate welded on the body, to let the shock oil tank go throughtout.



- Stick a piece of foam on the body, to protect the shock oil tank
- Fit tanks with rilsans, as shown on the picture below :



**CLICS :**

Clics references of each shock are noted on a sticker, sticked on the tank. We recommend to note and to keep it, in case of losing.

Example :

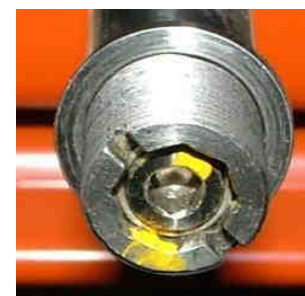
11	/	8
----	---	---

Bump

Rebound

Bump is always the first number, and rebound the second.

The « Zero » is the position when the adjusting screw (bump and rebound) is screwed tight. So, to have 11 clics for bump, unscrew the adjusting screw of 11 clics. For rebound, unscrew 8 clics.

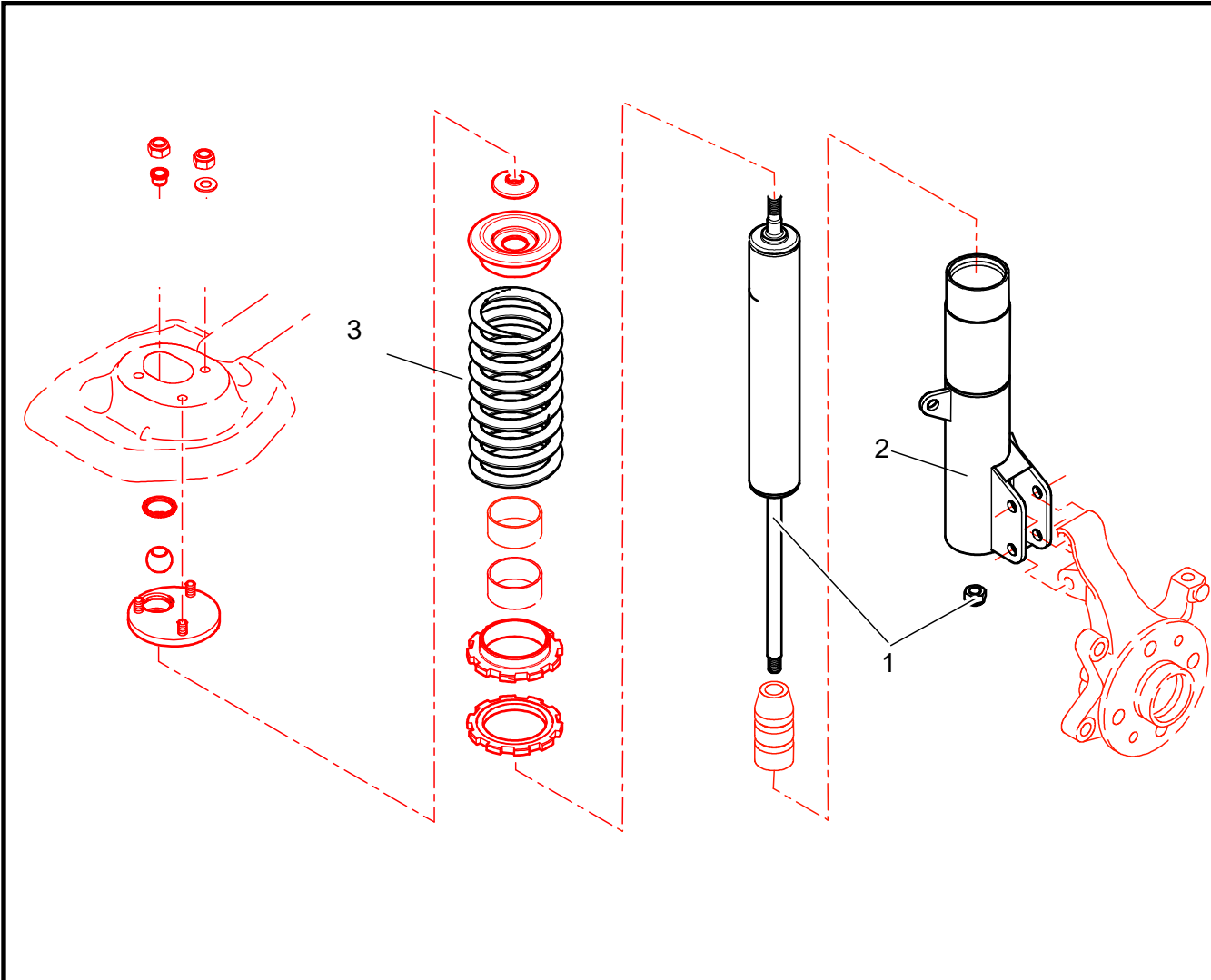
**Bump : 10 Clics / Rev****Rebound : 8 Clics / Rev**

To go softer or harder (weather conditions, or surfaces chagement), we recommend to adjust Bump and Rebound, Front and Rear in the same time. This way the balance of the car never change.

A step of 2 or 3 clics is significant.

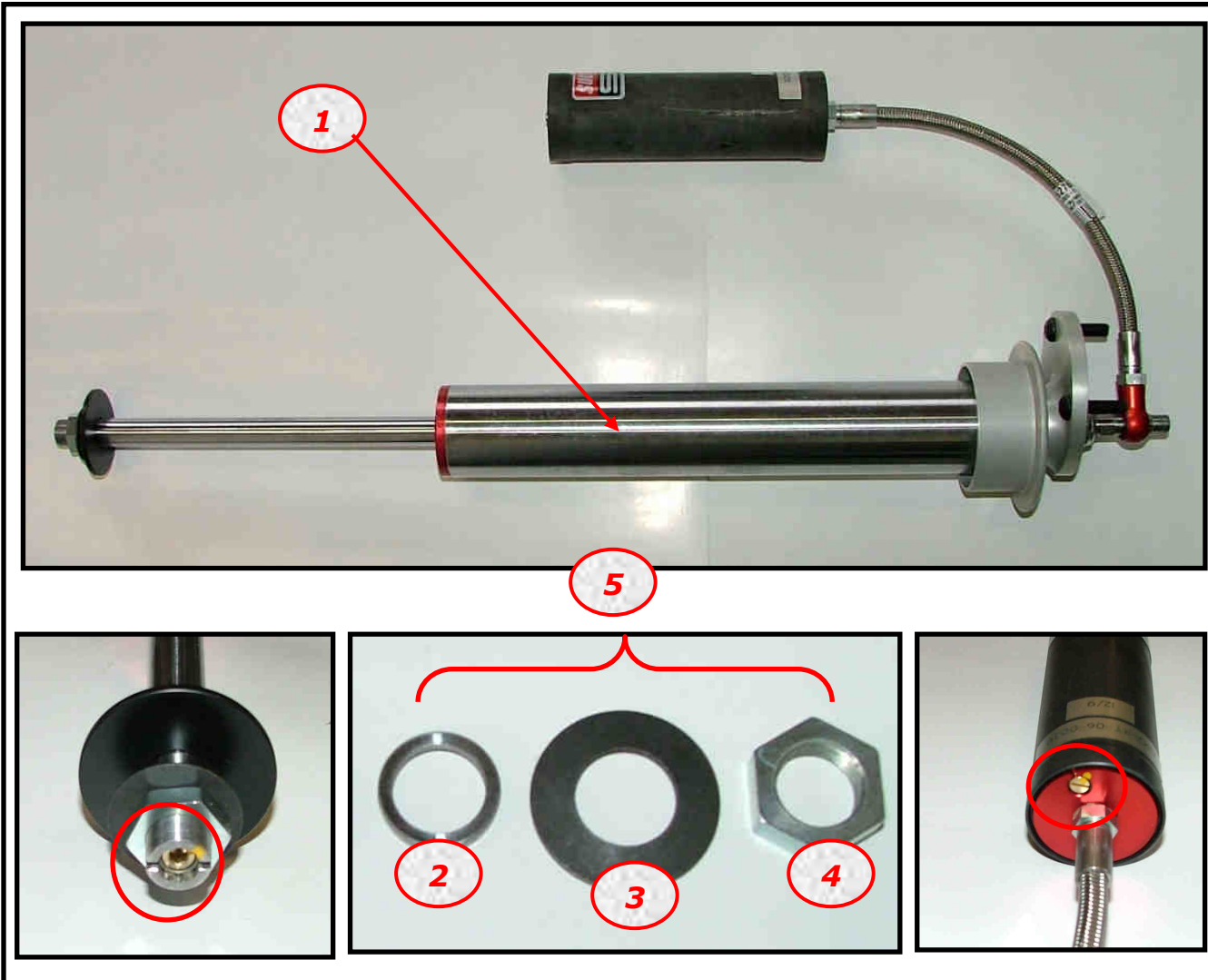


**E14 : FRONT SHOCKS (GRAVEL)**



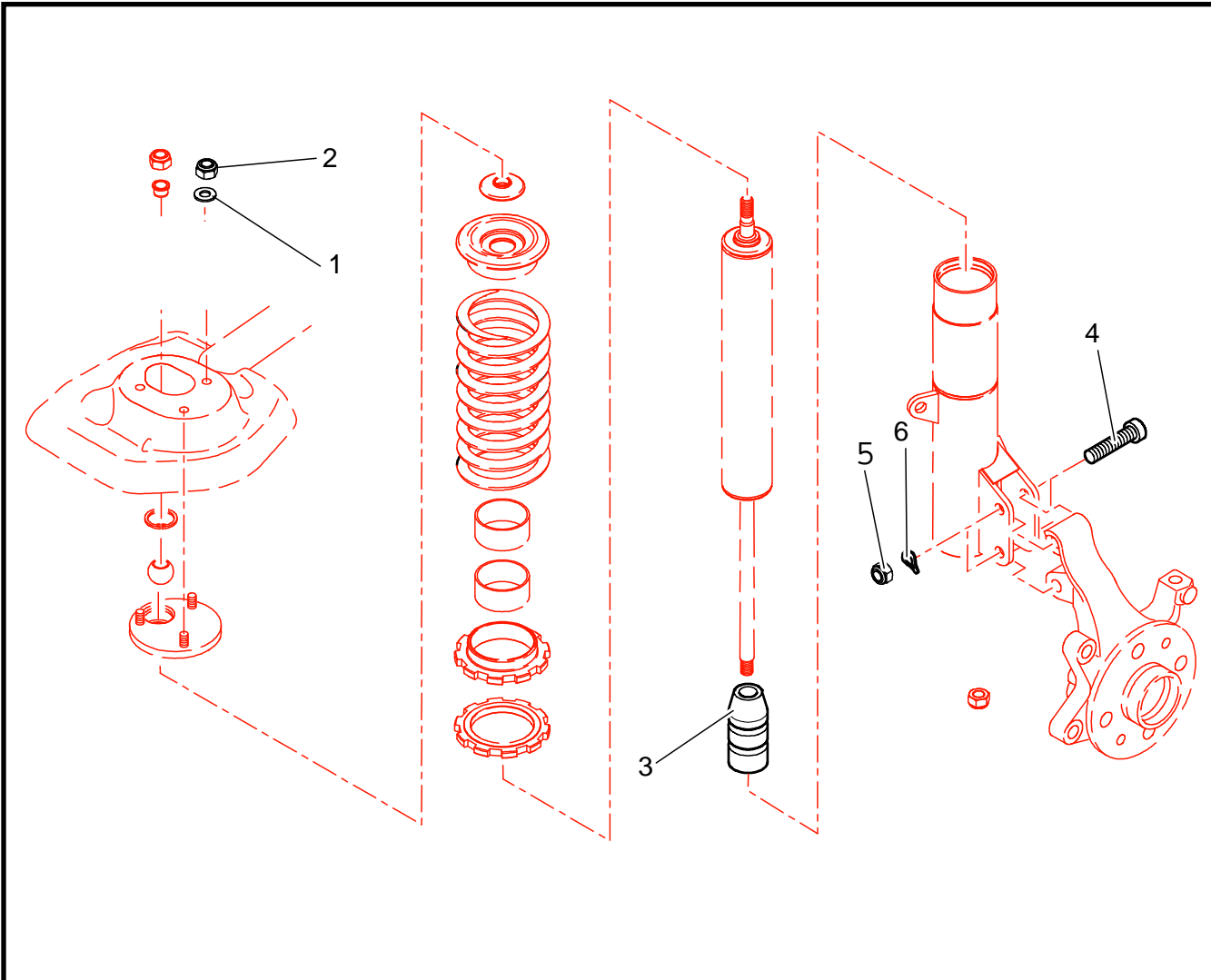
REF	PART NUMBER	QTY	DESCRIPTION
1	1E1461422A	2	Gravel front shock
2	1E1461240C	1	Right gravel front strut
2	1E1461241C	1	Left gravel front strut
3	1E1461329A	2	45N/mm gravel front shock spring
4			
5			
6			
7			
8			
9			
10			
11			
12			
13			
14			

**ADJUSTABLE GRAVEL FRONT SHOCKS (OPTION)**





REF	PART NUMBER	QTY	DESCRIPTION
1	1E1462768A	2	Gravel tarmac adjustable shock (2+3+4 included)
2	1E1462771A	2	Strut washer
3	1E1462770A	2	Spring washer
4	1E1462769A	2	Hexagonal nut
5	1E1462772A	1	Front adjustable shock spindle kit
6			
7			
8			
9			
10			
11			
12			
13			
14			
15			

**E14 : FRONT SHOCKS**



REF	PART NUMBER	QTY	DESCRIPTION
1	BCSP694778	6	Ø8x16x1.5 flat washer
2	BCSP693983	6	M8 self locking nut
3	1E1461335A	2	85mm gravel and tarmac bump stop
4	PS82154A10	4	M12 L60 alen screw
5	PS74719A10	4	M12 self locking nut
6	CS440011ST	4	Ø12 onduflex washer
7			
8			
9			
10			
11			
12			
13			
14			
15			

**FRONT SHOCK ON BODY / FRONT STRUT ASSEMBLY**

	Top shock plate / body nuts ( <i>ref 2</i> ) torque	<b>2.5</b> m.kg
	Front strut / front up-right screw ( <i>ref 4</i> ) torque	<b>10</b> m.kg