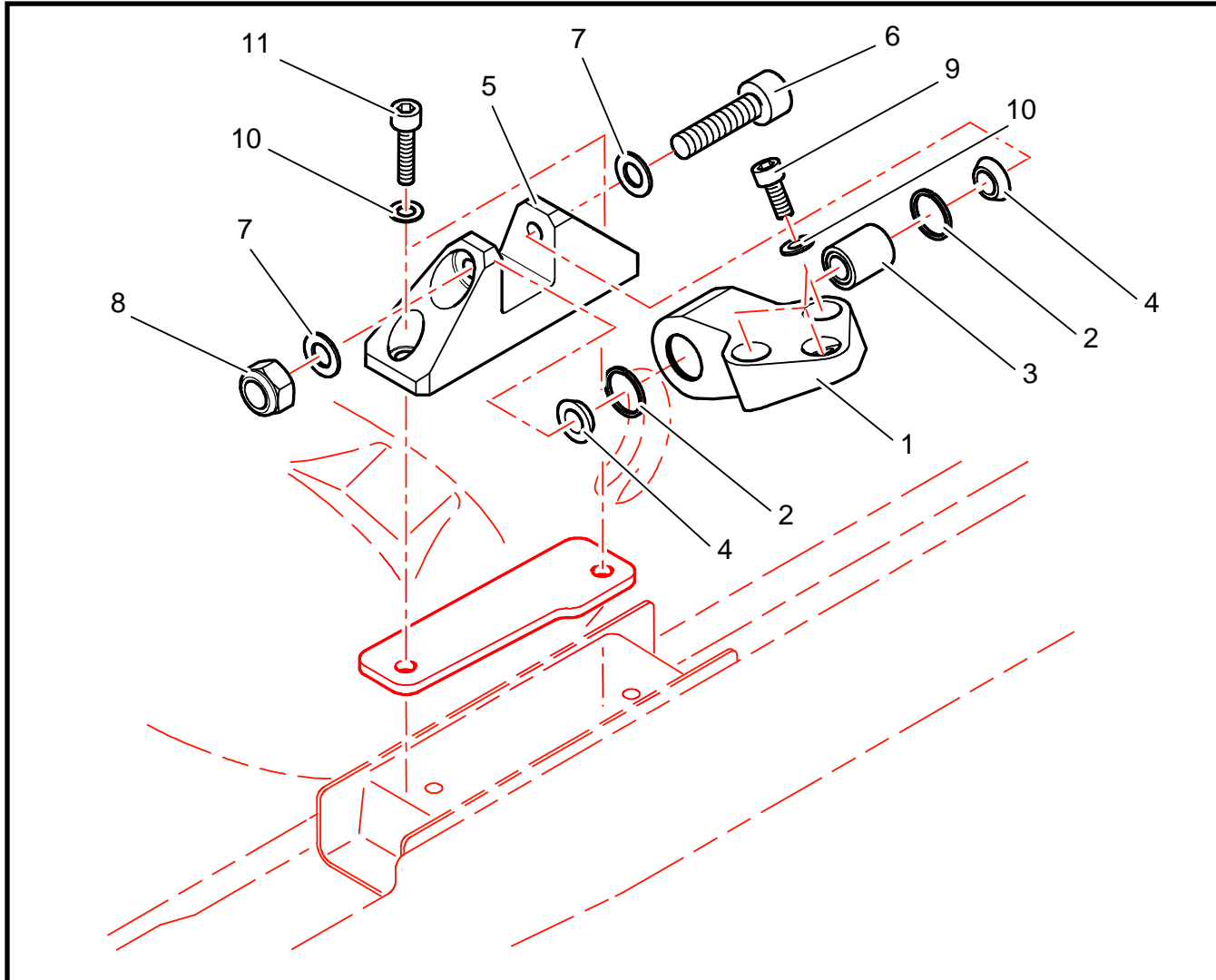


Chapter D :




ENGINE & GEARBOX MOUNTINGS

D11 : ENGINE AND GEARBOX MOUNTINGS

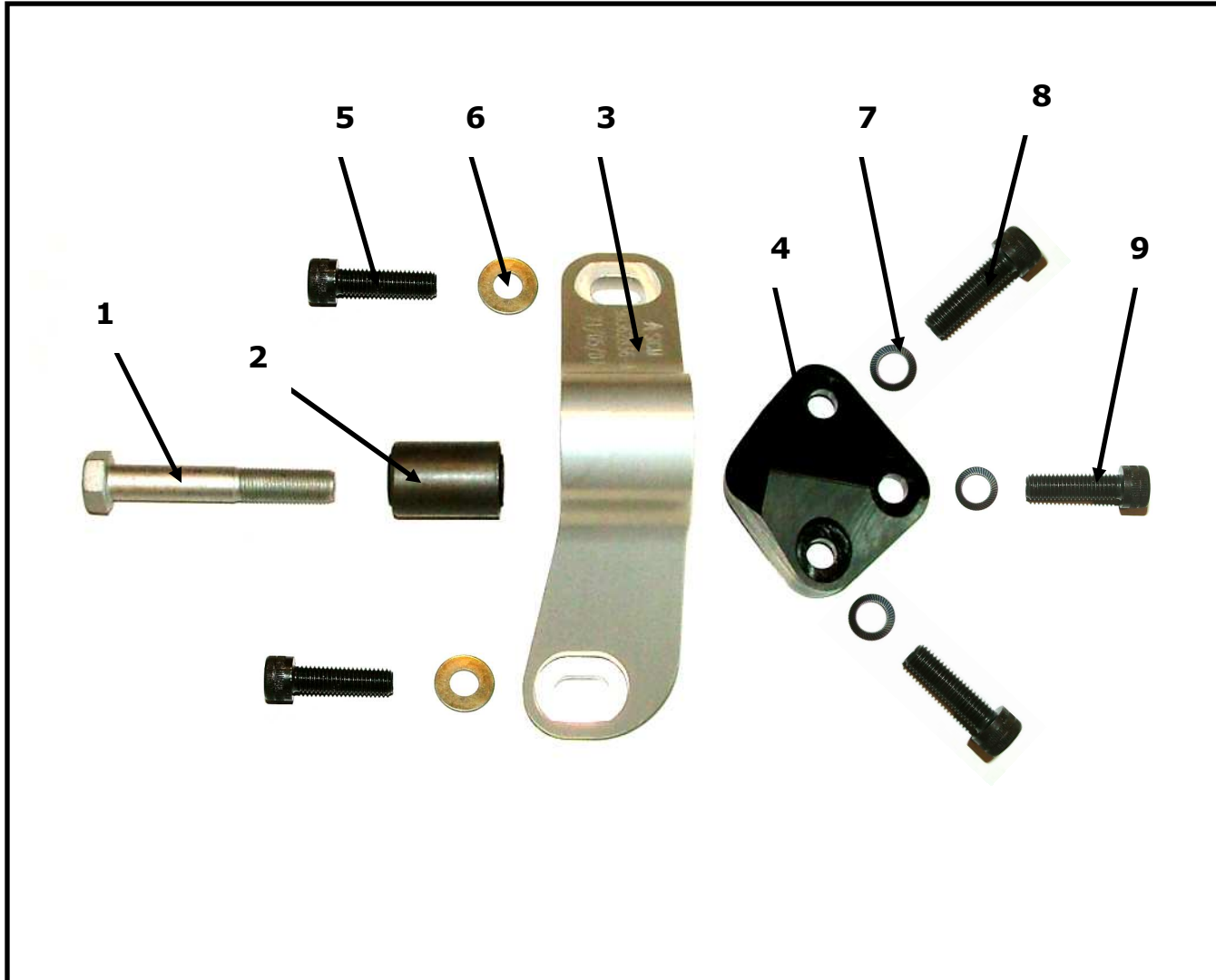


REF	PART NUMBER	QTY	DESCRIPTION
1	0D1161062C	1	Engine mounting on cylinder head
2	CS060018ST	2	Ø25 1.2 thick inside clips
3	0D1161313A	1	Engine mounting silent block
4	0D1161068C	2	Engine mounting spacer
5	0D1161069C	1	Engine mounting on body
6	PS82085A10	1	M10 L70 alen screw
7	CS440033ST	2	Ø10.2 x 20 sawtooth conic washer
8	PS74527A10	1	M10 self-locking nut
9	PS82539A10	3	M10 L35 alen screw
10	PS86078A10	5	Ø10x16x1 SPS washer
11	PS82008A10	8	M10 L30 alen screw
12			
13			
14			

ENGINE MOUNTING ASSEMBLY




	<p>Engine mounting on body screw torque (<i>ref 11</i>)</p>	<p>5 m.kg + Loctite 242</p>
	<p>M10 L70 screw torque (<i>ref 6</i>)</p>	<p>8 m.kg</p>
	<p>Engine mounting on cylinder head screws torque (<i>ref 9</i>)</p>	<p>5 m.kg + Loctite 242</p>

D11 : ENGINE AND GEARBOX MOUNTINGS (Optional)

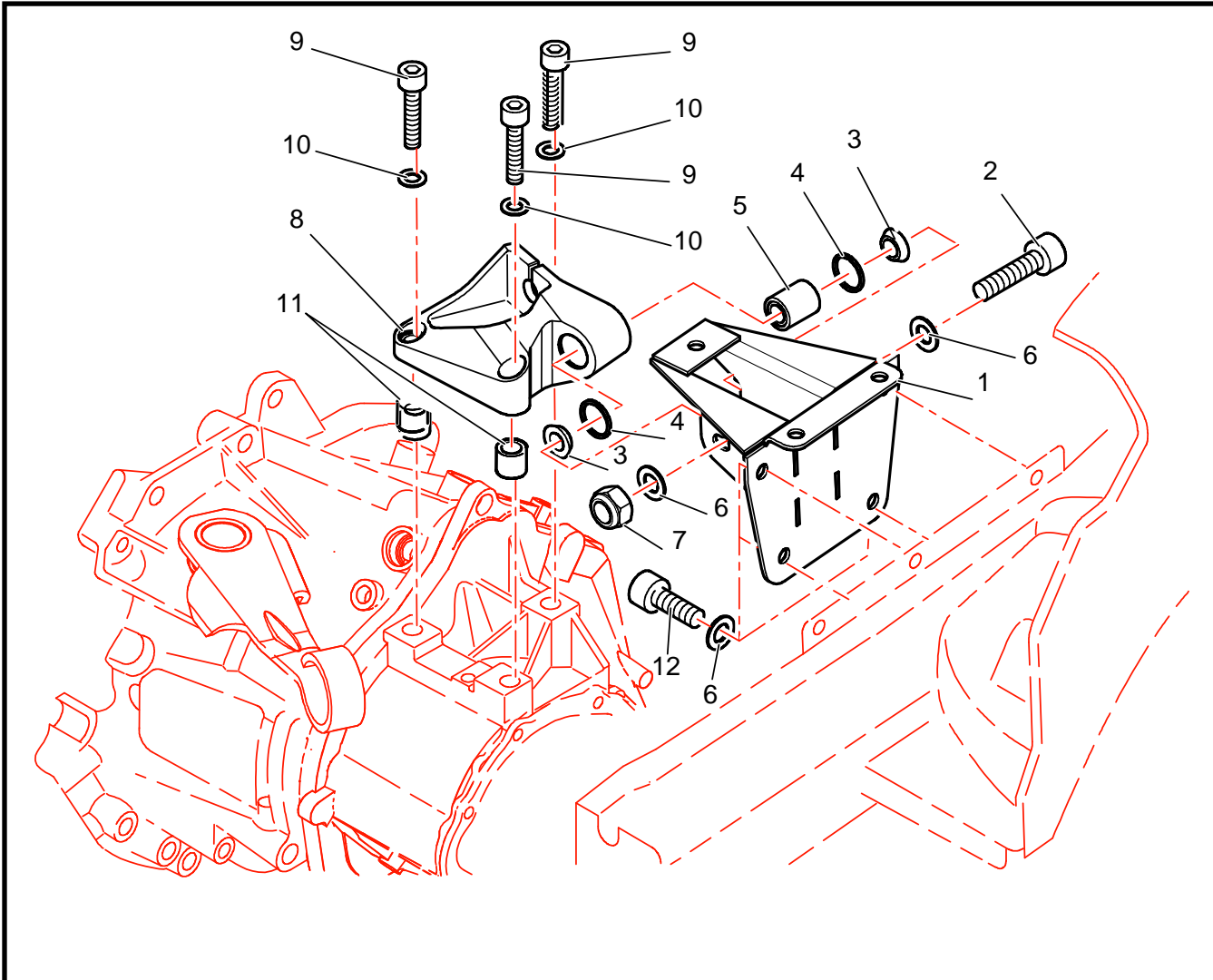


REF	PART NUMBER	QTY	DESCRIPTION
1	0D1162920A	1	M12x125 lg77 Cl 12.9 H head screw
2	PS93571A10	1	Engine mounting silent block
3	0D1162836B	1	Engine mounting on body
4	0D1162837B	1	Engine mounting on cylinder head
5	BCSP6913R8	2	M10x150 lg 35 Cl10.9 alen screw
6	BCSP694677	2	d10 D20 th2 washer
7	PS86078A10	3	d10 D16 th1 SPS washer
8	BCSP691399	2	M10x150 lg40 Cl8.8 alen screw
9	BCSP6913R8	1	M10x150 lg35 Cl10.9 alen screw
10			
11			
12			
13			
14			

ENGINE MOUNTING ASSEMBLY (Optional)




	<p>Engine mounting on body screw torque (<i>ref 5</i>)</p>	<p>5 m.kg + Loctite 242</p>
	<p>M12x125 Ig77 Cl12.9 H head screw torque (<i>ref 1</i>)</p>	<p>8 m.kg</p>
	<p>Engine mounting on cylinder head screws torque (<i>ref 8 and 9</i>)</p>	<p>5 m.kg + Loctite 242</p>

D11 : ENGINE AND GEARBOX MOUNTINGS

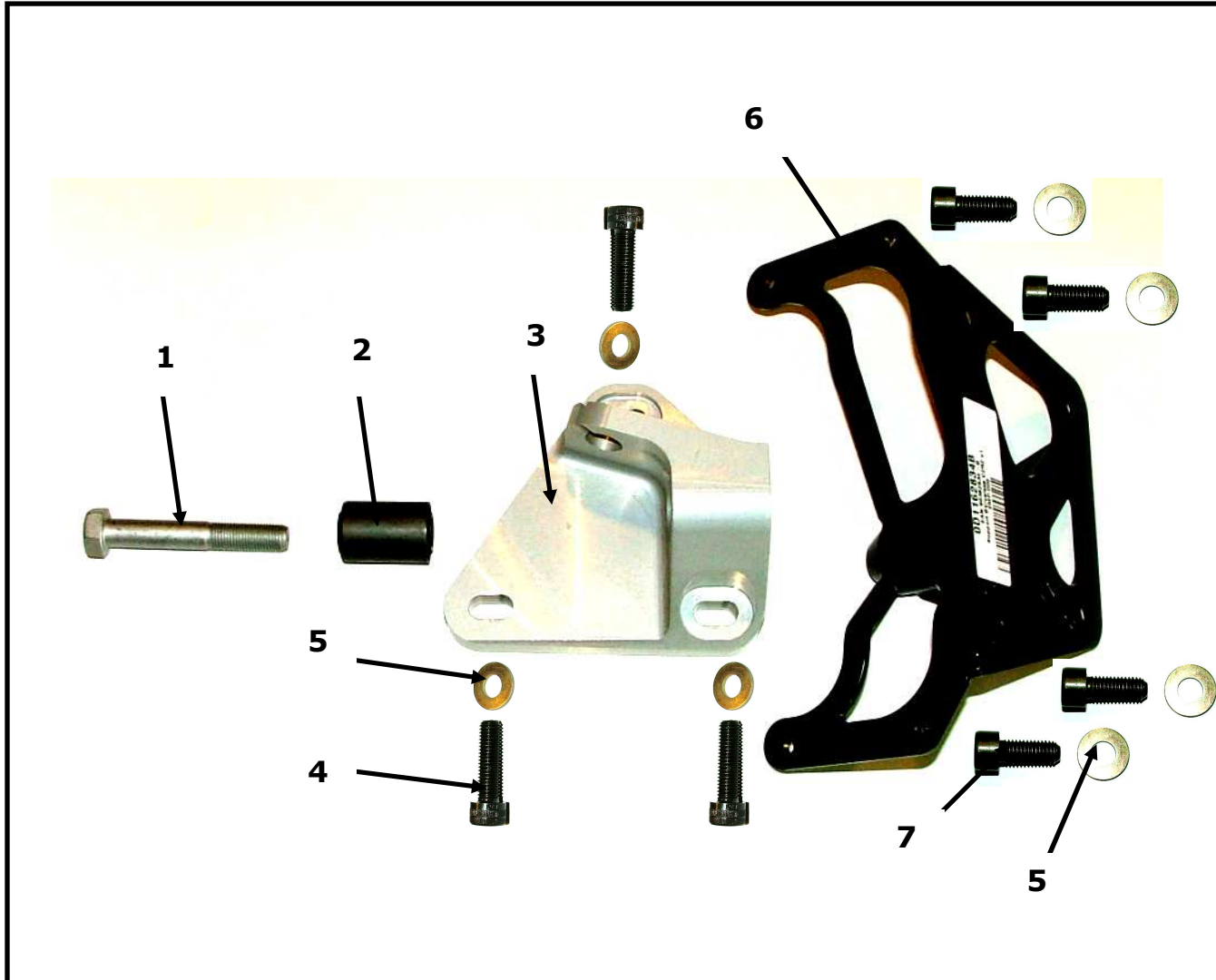


REF	PART NUMBER	QTY	DESCRIPTION
1	0D1161076E	1	Gearbox mounting on body
2	PS82076A10	1	M10 L60 alen screw
3	0D1161068C	2	Gearbox mounting spacer
4	CS060018ST	2	Ø25 thick 1.2 inside clips
5	0D1161313A	1	Gearbox mounting silent block
6	CS440033ST	6	Ø10.2 x 20 sawtooth conic washer
7	PS74527A10	1	M10 self-locking nut
8	0D1161061C	1	Gearbox mounting on gearbox
9	PS82008A10	3	M10 L30 alen screw
10	PS86078A10	3	Ø10x16x1 SPS washer
11	BCSP696881	2	Ø13 L10 pin
12	PS82524A10	4	M10 L25 Cl2.9 alen screw
13			
14			

GEARBOX MOUNTING ASSEMBLY




	<p>Gearbox mounting screws torque (<i>ref 9</i>)</p>	<p>5 m.kg + Loctite 242</p>
	<p>Gearbox mounting on body screws torque (<i>ref 12</i>)</p>	<p>8 m.kg + Loctite 242</p>
	<p>M10 L60 screw torque (<i>ref 2</i>)</p>	<p>8 m.kg</p>

D11 : ENGINE AND GEARBOX MOUNTINGS

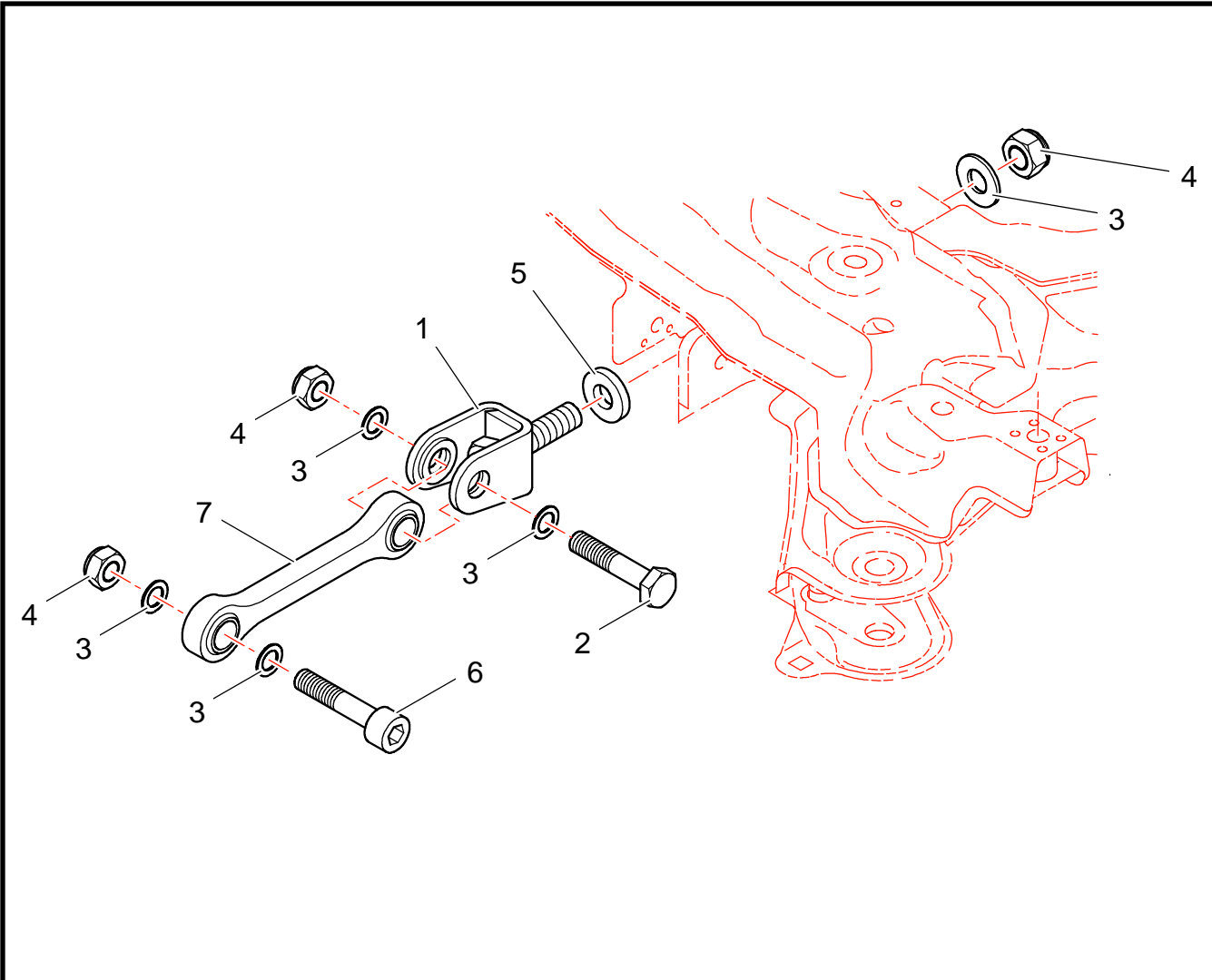


REF	PART NUMBER	QTY	DESCRIPTION
1	0D1162920A	1	M12x125 lg77 Cl 12.9 H head screw
2	PS93571A10	1	Gearbox mounting silent block
3	0D1162835B	1	Gearbox mounting on gearbox
4	BCSP6913R8	3	M10x150 lg35 Cl10.9 alen screw
5	BCSP694677	7	d10 D20 th2 washer
6	0D1162834B	1	Gearbox mounting on body
7	BCSP691353	4	M10x150 lg25 Cl10.9 alen screw
8			
9			
10			
11			
12			
13			
14			

GEARBOX MOUNTING ASSEMBLY (Optional)



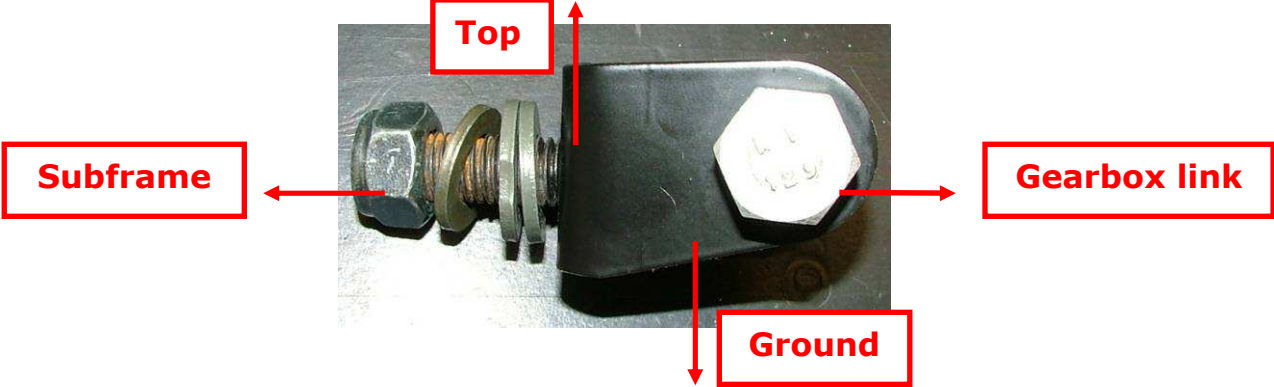
	<p>Gearbox mounting on gearbox screws torque (<i>ref 4</i>)</p>	<p>5 m.kg + Loctite 242</p>
	<p>Gearbox mounting on body screws torque (<i>ref 7</i>)</p>	<p>5 m.kg + Loctite 242</p>
	<p>M12x125 lg77 Cl12.9 H head screw torque (<i>ref 1</i>)</p>	<p>8 m.kg</p>

D11 : ENGINE AND GEARBOX MOUNTINGS



REF	PART NUMBER	QTY	DESCRIPTION
1	0D1161418A	1	Gearbox link clevis on subframe
2	CS550040ST	1	M12 L45 CI12.9 H screw
3	BCSP694628	5	Ø12x25 thick 1.5 washer
4	CS250012ST	3	M12 self locking nut
5	BCSP401023	1	Ø22x12 thick 2.5 washer
5	BCSP694930	1	Ø22x12 thick 3 washer
5	BCSP508502	1	Ø22x12 thick 4.5 washer
5	BCSP696245	1	Ø24x13 thick 0.6 washer
6	PS82572A10	6	M12 L50 alen screw
7	0D1161414A	1	Gearbox link
8			
9			
10			
11			
12			

D11 : ENGINE AND GEARBOX MOUNTINGS

<p>!!!</p>	<p>Gearbox link setting : the total nominal thickness of spacers (ref 5) is 5mm. It can swing to - 5 / + 5 mm, to remove any efforts on gearbox and engine silent blocks.</p>	
	<p>Gearbox link screws torque (ref 2 and 6)</p>	<p>8 m.kg</p>
	<p>Gearbox link clevis nut torque (ref 4)</p>	<p>8 m.kg + Loctite 242</p>
<p>A</p>	<p>Pay attention to the side of the gearbox link clevis, as shown on the picture below.</p>  <p>The photograph shows a close-up of a gearbox link clevis assembly. A red box labeled 'Top' points to the top surface of the clevis. A red box labeled 'Subframe' points to the left side of the assembly. A red box labeled 'Gearbox link' points to the right side of the assembly. A red box labeled 'Ground' points to the bottom surface of the clevis.</p>	