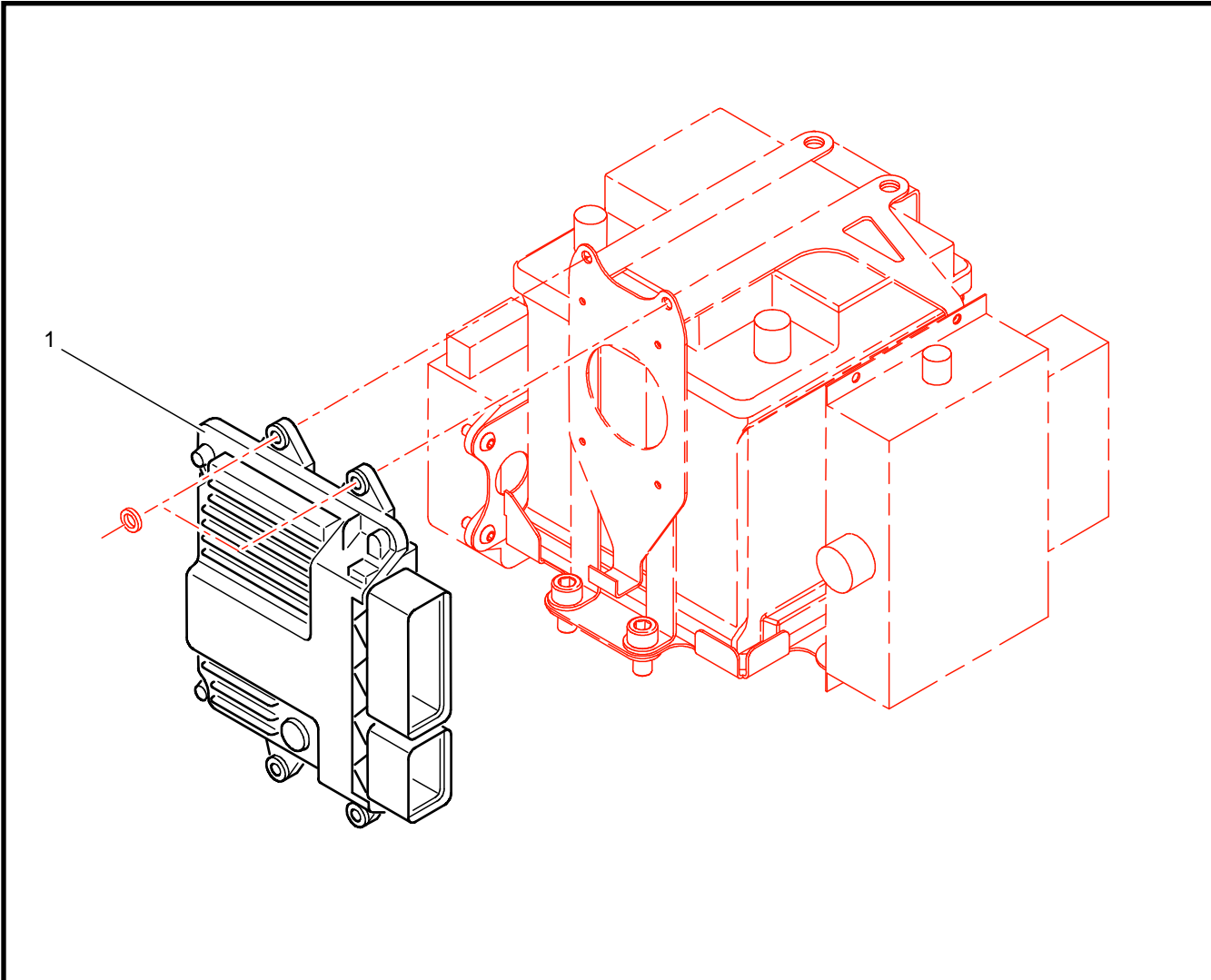


**A36 : ENGINE ECU**



| REF | PART NUMBER | QTY | DESCRIPTION    |
|-----|-------------|-----|----------------|
| 1   | 0A3662638A  | 1   | SRA Engine ECU |
| 2   |             |     |                |
| 3   |             |     |                |
| 4   |             |     |                |
| 5   |             |     |                |
| 6   |             |     |                |
| 7   |             |     |                |
| 8   |             |     |                |
| 9   |             |     |                |
| 10  |             |     |                |
| 11  |             |     |                |
| 12  |             |     |                |
| 13  |             |     |                |
| 14  |             |     |                |
| 15  |             |     |                |

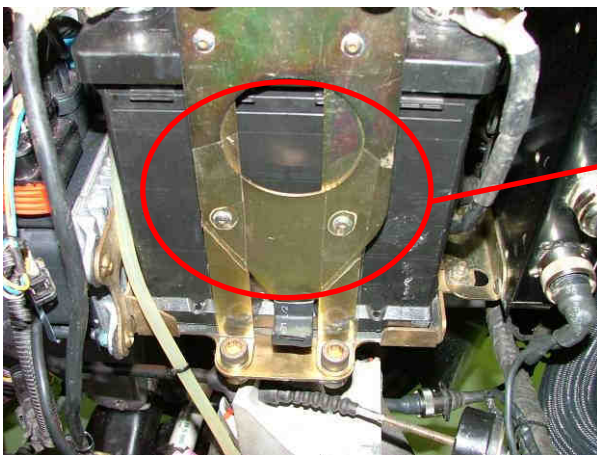
**ENGINE ECU ASSEMBLY**

**!!!**

For a better reability of your SRA Ecu, isolate it to the ground by following instructions below :



**Apply 2 skins of heat shrinkable sheath to isolate ECU body to the ground.**

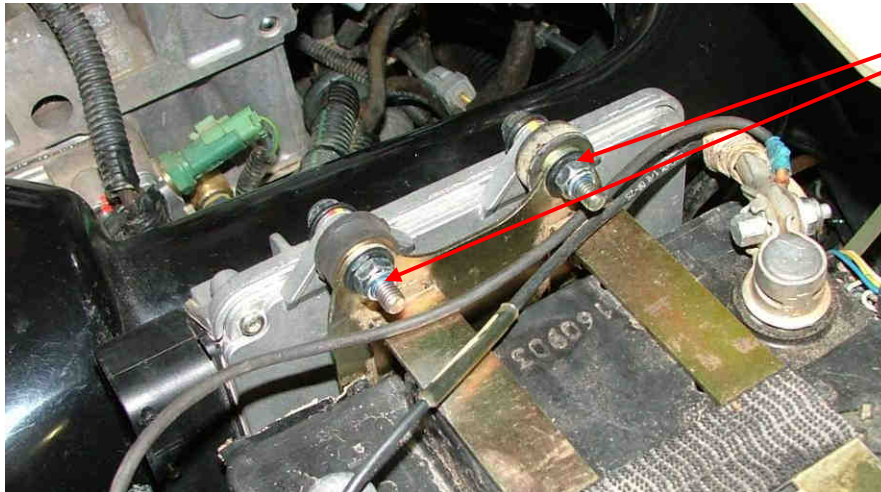


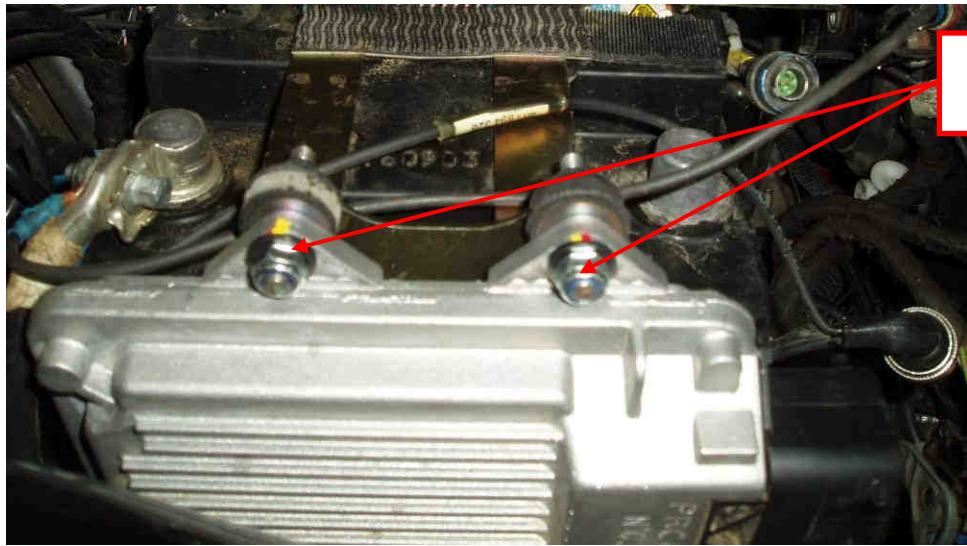
**Apply 2 skins 3M tape, to isolate the ECU body to the ground.**



**Apply 2 skins 3M tape, to isolate the ECU body to the ground.**

**Washers BCSP694904 and nuts PS74050A10**





washers BCSP694904 and  
nuts PS74050A10

!!!

We remind you that to transform a C2 Challenge in a C2 R2, your SRA ECU needs to be re-softed, and a new map has to be written. It needs around 1 week to do both operations.

Please contact Mr Bernard Belières (+33 1 30 84 06 69 / [bernard.belieres@mpsa.com](mailto:bernard.belieres@mpsa.com))

Or Mr François Douniaux (+33 1 30 84 03 06 / [francois.douniaux@mpsa.com](mailto:francois.douniaux@mpsa.com))

**Pay attention to let us know if your engine is in Challenge (155 hp)  
or R2 (185 hp) spec, and if the base of the car is a VTS or GT.**